

NGDA Lifecycle Maturity Assessment (LMA)



May 2, 2017

2017 LMA Team Members

Interagency Team

- Kyle Arndt (NPS)
- Anne Ball (NOAA)
- Wendy Blake-Coleman (EPA)
- David Cackowski (US Census Bureau)
- Roger Johnson (NPS)
- Lisa McBride (Forest Service)
- Lorri Peltz-Lewis (Forest Service)
- Charles Spicer (US Census Bureau)
- Douglas Vandegraft (BOEM)
- Butch Lazorchak (Library of Congress) for Archive Stage

Support Team

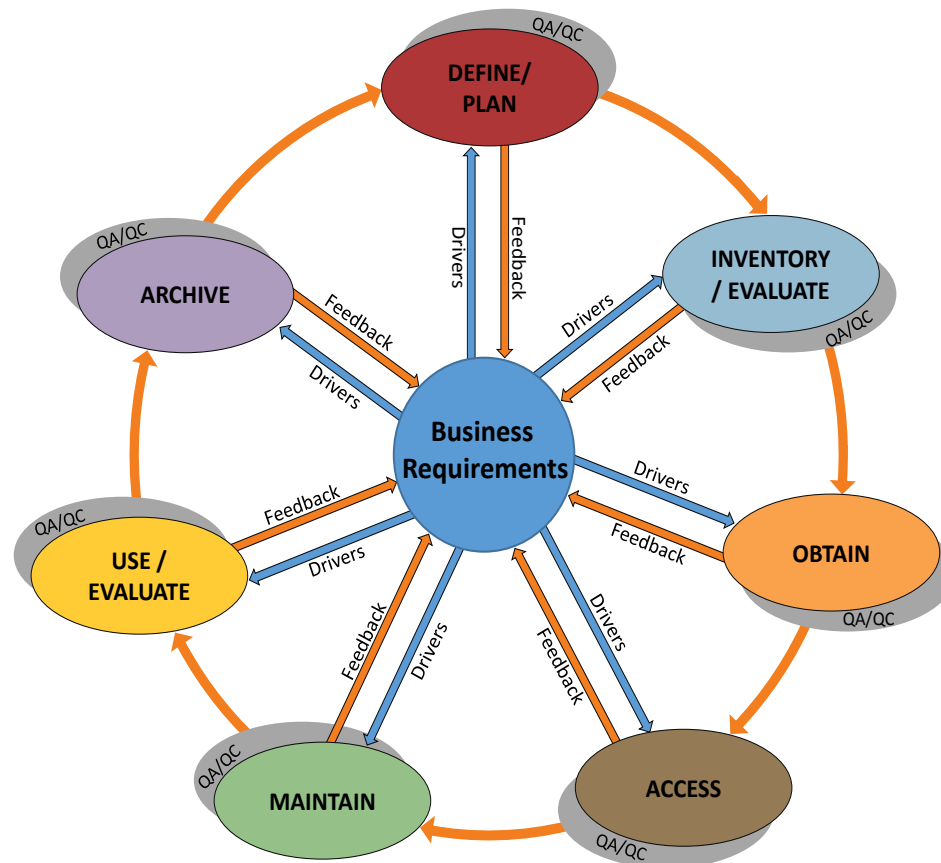
- Jennifer Carlino (FGDC)
- Jim Irvine (ArdentMC)
- Robin Hoban (BAH)
- Bradley Macpherson (BAH)
- John Davidson (Image Matters)
- Lara Duffy (Image Matters)

Lifecycle Maturity Assessment- Benefits

- ❖ Fulfills [OMB A-16 Supplemental Guidance](#) requirements
 - ❖ 3.4.1. NGDA Dataset Management - NGDA Dataset Managers should evaluate their NGDA Dataset(s) against the Geospatial Data Lifecycle stages in order to report on their maturity and status
- ❖ Consistent maturity metrics for all NGDA Datasets in the NGDA Portfolio to:
 - ❖ Identify opportunities where maturity can be improved
 - ❖ Describe strengths and weaknesses among NGDA Datasets and Themes
 - ❖ Identify where access and discoverability can be enhanced
 - ❖ Promote collaboration among Theme strategic goals
 - ❖ Provide managers with a broad view of the status of the national geospatial portfolio

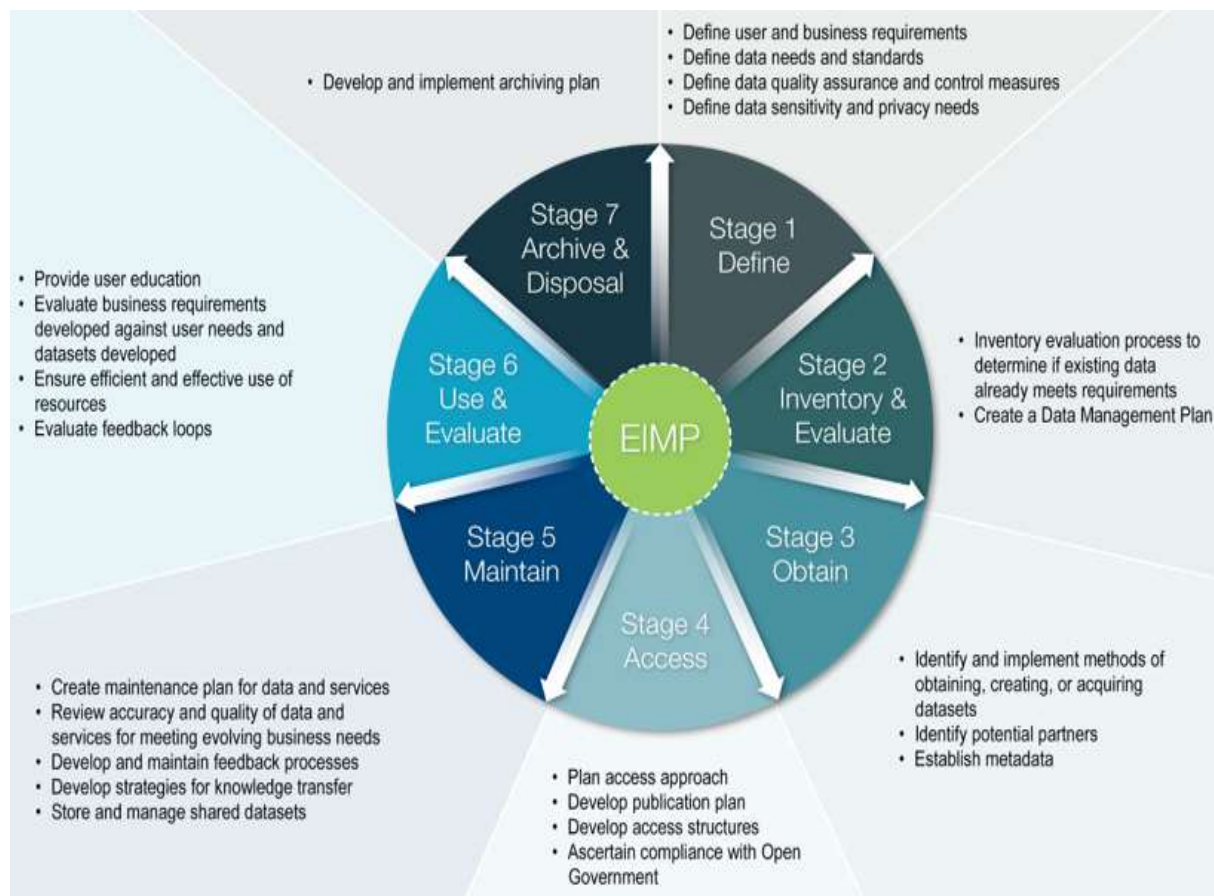
2017 LMA Basic Assumptions- Lifecycle Stages

- ❖ No changes to the A-16 Geospatial Data Lifecycle Stages between the 2015 and 2017 LMA assessments



2017 LMA Basic Assumptions- Benchmarks

- ❖ No changes to the Lifecycle Stage Benchmarks between the 2015 and 2017 LMA assessments



2017 LMA Basic Assumptions- Maturity

- ❖ No changes to the maturity matrix between the 2015 and 2017 LMA assessments

Maturity	Maturity Characteristics for All Lifecycle Stages
Optimized; Established Rank = 5	Dataset meets virtually all business needs of all users. The dataset is considered authoritative by owners and secondary users. It is curated across all stages of the approved lifecycle. Future needs are defined for both the primary owner and secondary users on a regular basis and resources for addressing both current and future business requirements are available.
Mature; Consistent Rank = 4	Dataset meets all the business needs of the primary owner and most of the secondary users. The dataset is curated and used as an authoritative resource by the primary owner and secondary users. Future needs are being identified and steps are planned to address these. All stages are supported and reviewed on a recurring basis. The dataset is well managed in relation to the approved lifecycle.
Managed; Predictable Rank = 3	Dataset meets a significant number of the business needs of the primary owner and is widely used by secondary users. Benchmark activities are occurring in at least four of the approved lifecycle stages. Management practices in relation to the approved lifecycle is moderate but consistent. Dataset is integrating changing business requirements in lifecycle stages impacting overall maturity.
Transition; Transformation Rank = 2	Dataset meets business needs of the primary owner and has moderate use by secondary users. Benchmark activities are occurring in at least three stages. Efforts to integrate funding, include partners, and obtain data are not supported in a sustained manner. Management practices in relation to the stages of the approved lifecycle is limited.
Planned; Initial Development Rank = 1	Dataset in initial planning or limited in meeting business needs of the primary owner. Benchmark activities in the approved lifecycle are just starting to consider secondary uses, Partners/stakeholders involvement is being defined and developed to support additional dataset uses. Dataset development is in a very early stage. Minimal or limited management against the benchmarks in the approved lifecycle.
No Activity Rank = 0	Dataset not developed or meets project/local business needs of the primary owner. Secondary, additional uses, or partners/stakeholders were not considered. Dataset is not recognized as authoritative data or is part of a similar dataset. Not managed to any of the benchmarks in the approved lifecycle.

Lifecycle Maturity Assessment- Overview

- ❖ 20 Maturity Ranked Questions
 - ❖ 12 Justification Questions to support maturity responses
 - ❖ 2 Feedback Questions to determine number of personnel and hours needed for LMA and feedback on assessment
- ❖ All Maturity Ranked Questions Required
 - ❖ Justification responses required if either:
 - Question response ranked 0 (text based justification)
 - Question response ranked 1-5 (pick-list justification questions)
 - Other response selected (text based justification)
- ❖ To keep questions aligned with 2015 LMA, made adjustments - starting 2017 LMA with question zero “0”
- ❖ [How to Calculate Maturity](#) updated for 2017

Use [2015 LMA NGDA Dataset submission](#) to complete 2017

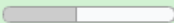
Lifecycle Maturity Assessment- Components

1. **Questions:** An interagency team developed a series of benchmark activities associated with each lifecycle stage that must be completed for the dataset to reach full maturity.
2. **Clarifying statements:** For each question, there are examples and supporting references that may be associated with the successful completion of the question.
3. **Metrics:** Each question has a series of metrics in the form of response options from which the Dataset Manager will need to select. Response options reflect each level of maturity from 0 to 5

Lifecycle Maturity Assessment- Components

Example:

2017 NGDA Lifecycle Assessment - UAT
Assessing 2017 National Geospatial Data Asset (NGDA) Lifecycle Maturity

0%  100%

STAGE 3- Obtain
The collection, purchase, conversion, transformation, sharing, exchanging, or creation of geospatial data that were selected to meet the business needs is identified
This stage consists of three maturity questions and four justification questions.

This page will timeout in 60 minutes. You can save your work by hitting **NEXT** and returning to the page.

Your Dataset: NGDAID 13: CT13

10) Is there a process for obtaining data for this dataset?

Clarifying statement - Supporting examples may include: developing a data acquisition plan to procure the data. If the data is not available, the process could include methods to create, collect, produce, generate, make, build, or construct data that currently does not exist (new data), and generation of additional data. This includes any spatial data collected with government or contracted equipment. The process may also include determining cyclic refresh of the dataset and/or methodology used to create the dataset, identifying cost associated with conversion, the financial process created and updated for the purchase of, modification of, converting of, or transforming of data; methods to leverage the sharing or exchanging of data; and, creating or obtaining data to support and meet business requirements with respect to the geographic extent and data resolution. Also included are Federal Acquisition Regulations (FAR) as appropriate. Respondents for static datasets should consider this question in reference to the time the dataset was active.

References that pertain to Stage 3 Obtain: OMB Circular A-16 Supplemental Guidance, Stages of the Geospatial Data Lifecycle pursuant to OMB Circular A-16, and Federal Acquisition Regulations System, Electronic Code of Federal Regulations Title 48.

Choose one of the following answers

- No process exists (Please explain)
- Under development
- Developed, documented, and implementation started
- Implementation progressing
- Implementation well established
- Fully implemented including recurring assessments

Question

Clarifying Statement

References

Metrics - Response Options Ranked 0-5

Question index

1. Survey Navigation / Help
2. Introduction
3. Questions Overview
4. Questions for All Stages
5. STAGE 1- Define/Plan
6. STAGE 2- Inventory/Evaluate
- 7. STAGE 3- Obtain**
8. STAGE 4- Access
9. STAGE 5- Maintain
10. STAGE 6- Use/Evaluate
11. STAGE 7- Archive
12. Feedback Questions
13. Review and Approval
14. Submit

2017 Lifecycle Maturity Assessment Questions



LMA Questions- All Stages

- 0) Part 1: Is this dataset considered “active” or “static”?
- 0) Part 2: For the 2017 LMA, please provide what time frame the assessment includes?
- 0) Part 3: Do you have a process to evaluate the dataset to determine if it continues to meet the criteria established for an National Geospatial Data Asset (NGDA)?

0) = Maturity Ranked Questions

LMA Questions- All Stages

1) Is there a recurring process to obtain funding for all lifecycle stages of this dataset?

1.a) To justify your response to Question 1, what is the primary funding source for your NGDA?

1.b) To further justify your answer to Question 1, do you have secondary source(s) of funding?

1.b.1) What are the other source(s) of funding for your NGDA?

Bold = Maturity Ranked Questions

LMA Questions- All Stages

2) Is there a process in place to ensure that open government and transparency guidelines are followed in all lifecycle stages for this dataset?

3) Are there processes and tools in place so that staff are sufficiently knowledgeable to ensure the continuity of the dataset for all stages of the lifecycle, especially during staffing transitions?

Bold = Maturity Ranked Questions

LMA Questions- Stage 1: Define/Plan

4) Are business requirements defined and formalized?

5) Are there processes in place to ensure partners and stakeholders are involved in requirements collection?

5.a) To justify your response to Question 5, which external partners and stakeholders are involved in the requirements collection process?

Bold = Maturity Ranked Questions

LMA Questions- Stage 1 : Define/Plan

6) Is there a quality assurance process for the dataset?

6.a) To justify your response to Question 6, what methods are used to develop and complete quality assurance assessments?

7) Has an assessment been done to evaluate the sensitivity, privacy, and confidentiality of this dataset?

8) Are defined data standards used in collecting, processing, and/or rendering the data?

8.a) To justify your response to Question 8, what types of data standards are used in collection, processing, and/or rendering the data?

Bold = Maturity Ranked Questions

LMA Questions- Stage 2: Inventory/Evaluate

9) Is an assessment done to determine if data necessary to meet requirements already exists from other sources (either within or outside the agency) before collecting or acquiring new data?

9.a) To justify your response to Question 9, what actions are performed to determine if data already exists from other sources?

Bold = Maturity Ranked Questions

LMA Questions- Stage 3: Obtain

10) Is there a process for obtaining data for this dataset?

10.a) To justify your response to Question 10, what actions are performed to obtain data?

11) Is the metadata in an FGDC-endorsed geospatial metadata standard, follows the NGDA Metadata Guidelines, and is published?

Bold = Maturity Ranked Questions

LMA Questions- Stage 3: Obtain

12) Part 1: Is there a business process in place to determine the geographic coverage of the dataset and establish milestones to track progress towards completion?

12) Part 2: Based on the business requirements, what is the estimated completeness of the geographic coverage?

12.a) To justify your response to Question 12 Part 2, what is the geographic coverage of the dataset as defined by the business requirements?

Bold = Maturity Ranked Questions

LMA Questions- Stage 4: Access

13) Do you provide users access to the data in a digital machine-readable format?

13.a) To justify your response to Question 13, what types of digital machine-readable formatted web services or data download services are available for this dataset?

Bold = Maturity Ranked Questions

LMA Questions- Stage 5: Maintain

- 14) Is there a maintenance process in place for this dataset?**
- 15) Is there a quality assurance/quality control (QA/QC) process as part of this dataset's maintenance?**
- 16) Is there a process to determine if the dataset meets user needs?**

Bold = Maturity Ranked Questions

LMA Questions- Stage 6: Use/Evaluate

17) Is there a process to provide users information on how to evaluate and properly use the dataset?

18) Do the business processes and management practices include an assessment of changing technology?

Bold = Maturity Ranked Questions

LMA Questions- Stage 7: Archive

19) Is there an archiving appraisal process for the dataset?

19.a) To justify your response to Question 19, where is digital data being archived as determined by your appraisal process outcome?

19.b) To justify your response to Question 19, where is printed data being archived as determined by your appraisal process outcome?

Bold = Maturity Ranked Questions

LMA Questions- Feedback

20) What is the total number of personnel and estimated aggregate amount of time required for gathering and entering information to complete the LMA for this NGDA?

21) Please provide any other comments you have about the NGDA Lifecycle Maturity Assessment:

Bold = Maturity Ranked Questions

2017 Lifecycle Maturity Assessment Online Tool



NGDA LMA Online Tool

- ❖ Uses LimeSurvey
- ❖ Available online for easy information capture and reporting
- ❖ Each NGDA Dataset Manager will receive a token for each individual NGDA Dataset (can be multiple tokens)

2017 NGDA Lifecycle Assessment - DRAFT

Assessing 2017 National Geospatial Data Asset (NGDA) Lifecycle Maturity

This is a controlled survey. You need a valid token to participate.
If you have been issued a token, please enter it in the box below and click continue.

Token:

[Continue](#)

Token for each NGDA

Click the button to print the current page or save as a PDF.

[Print](#) [PDF](#)

NGDA LMA Online Tool

- ❖ Each NGDA Dataset identified with Dataset Manager as part of the online assessment

2017 NGDA Lifecycle Assessment - UAT
Assessing 2017 National Geospatial Data Asset (NGDA) Lifecycle Maturity

Welcome, Jim Irvine.

This is the 2017 A-16 NGDA Lifecycle Maturity Assessment

Your dataset: NGDAID 13: CT13 Identifies NGDA

Next > Exit and clear survey

Click the button to print the current page or save as a PDF.
Print PDF

NGDA LMA Online Tool


❖ Navigate LMA on Right

2017 NGDA Lifecycle Assessment - UAT

Assessing 2017 National Geospatial Data Asset (NGDA) Lifecycle Maturity

0% 100%

Survey Navigation / Help



Welcome - This is the 2017 A-16 NGDA Lifecycle Maturity Assessment

Your Dataset: NGDAID 13: CT13

Welcome - This is the 2017 A-16 NGDA Lifecycle Maturity Assessment. Your dataset: NDGAID13: CT13 This assessment was built using LimeSurvey and operates successfully on MS Edge, Firefox, and Chrome browsers. **We recommend using the latest versions of MS Edge, Firefox, or Chrome to complete this survey.**

Question index

1. Survey Navigation / Help
2. Introduction
3. Questions Overview
4. Questions for All Stages
5. STAGE 1- Define/Plan
6. STAGE 2- Inventory/Evaluate
7. STAGE 3- Obtain
8. STAGE 4- Access
9. STAGE 5- Maintain
10. STAGE 6- Use/Evaluate
11. STAGE 7- Archive
12. Feedback Questions
13. Review and Approval
14. Submit

Navigate LMA

Your Dataset: NGDAID 13: CT13

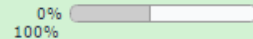
Identifies NGDA

NGDA LMA Online Tool

❖ Typical LMA Maturity Ranked Question

2017 NGDA Lifecycle Assessment - UAT

Assessing 2017 National Geospatial Data Asset (NGDA) Lifecycle Maturity



STAGE 3- Obtain

The collection, purchase, conversion, transformation, sharing, exchanging, or creation of geospatial data that were selected to meet the business needs is identified. This stage consists of three maturity questions and four justification questions.

This page will timeout in 60 minutes. You can save your work by hitting **NEXT** and returning to the page.

Your Dataset NGDAID 13: CT13

10) Is there a process for obtaining data for this dataset?

Clarifying statement - Supporting examples may include: developing a data acquisition plan to procure the data. If the data is not available, the process could include methods to create, collect, produce, generate, make, build, or construct data that currently does not exist (new data), and generation of additional data. This includes any spatial data collected with government or contracted equipment. The process may also include determining cyclic refresh of the dataset and/or methodology used to create the dataset, identifying cost associated with conversion, the financial process created and updated for the purchase of, modification of, converting of, or transforming of data; methods to leverage the sharing or exchanging of data; and, creating or obtaining data to support and meet business requirements with respect to the geographic extent and data resolution. Also included are Federal Acquisition Regulations (FAR) as appropriate. Respondents for static datasets should consider this question in reference to the time the dataset was active.

References that pertain to Stage 3 Obtain: OMB Circular A-16 Supplemental Guidance, Stages of the Geospatial Data Lifecycle pursuant to OMB Circular A-16, and Federal Acquisition Regulations System, Electronic Code of Federal Regulations Title 48.

Choose one of the following answers

- No process exists (Please explain)
- Under development
- Developed, documented, and implementation started
- Implementation progressing
- Implementation well established
- Fully implemented including recurring assessments

Question

Clarifying Statement

References

Metrics - Response Options Ranked 0-5

Question index

1. Survey Navigation / Help
2. Introduction
3. Questions Overview
4. Questions for All Stages
5. STAGE 1- Define/Plan
6. STAGE 2- Inventory/Evaluate
- 7. STAGE 3- Obtain**
8. STAGE 4- Access
9. STAGE 5- Maintain
10. STAGE 6- Use/Evaluate
11. STAGE 7- Archive
12. Feedback Questions
13. Review and Approval
14. Submit


NGDA LMA Online Tool

❖ Review and Submittal

2017 NGDA Lifecycle Assessment - UAT
Assessing 2017 National Geospatial Data Asset (NGDA) Lifecycle Maturity

0%
100%

Review and Approval



Your Dataset: NGDAID 13: CT13

Please review your answers. When you submit your 2017 LMA, if you have not chosen a metric response option for all questions, you will receive a warning message and redirected to the first question with no metric response.

Printing tips: Please print using the landscape option - the Question Index is part of the printout and will overlap. All browsers tested have similar printing issues.

If you plan to answer any questions at a later time, please close your browser and return using the URL sent in your invitation to take the survey. Any questions you have provided an answer for have been stored in the database and will populate the survey upon your return.


You have the option to print your answers at the bottom of this page.

Question index

1. Survey Navigation / Help
2. Introduction
3. Questions Overview
4. Questions for All Stages
5. STAGE 1 - Define/Plan
6. STAGE 2 - Inventory/Evaluate
7. STAGE 3 - Obtain
8. STAGE 4 - Access
9. STAGE 5 - Maintain
10. STAGE 6 - Use/Evaluate
11. STAGE 7 - Archive
12. Feedback Questions
13. Review and Approval
14. Submit

Are you **Jim Irvine**, the designated Dataset Manager, completing this for the NGDAID 13 CT13 dataset?

Yes No

 If this is not the correct NGDA please contact NGDA_LMA_help@fgdc.gov.

Who has been or will be reviewing the information in this submittal?

	Name	Email	Date
Supervisor	<input type="text"/>	<input type="text"/>	<input type="text"/>
Theme Lead	<input type="text"/>	<input type="text"/>	<input type="text"/>
Executive Champion	<input type="text"/>	<input type="text"/>	<input type="text"/>
SADGI*	<input type="text"/>	<input type="text"/>	<input type="text"/>
Other	<input type="text"/>	<input type="text"/>	<input type="text"/>

Identifies LMA Respondent

Identifies LMA Reviewer

Lifecycle Maturity Assessment- Output

NGDA Dataset Report

Official NGDA Title: Bailey's Ecoregions And Subregions Of The United States, Puerto Rico, And The U.S. Virgin Islands - Direct Download

Metadata Record Title: Bailey's Ecoregions And Subregions Of The United States, Puerto Rico, And The U.S. Virgin Islands - Direct Download

A-16 NGDA Theme: Biota

Executive NGDA Theme Champion(s):
Name: Jerry Johnston
Agency: DOI
Email: jerry_johnston@ios.doi.gov

Theme Lead(s):
Name: Marcia McNiff
Agency: USGS
Email: mmcniff@usgs.gov

Dataset Manager(s):
Name: Robert G. Bailey
Agency: USFS
Email: robertgbailey@fs.fed.us

Metadata:
Registration Status: Complete
Registered on: 3/26/2015
GeoPlatform Link*: <https://www.geoplatform.gov/node/243/23f0e52e0a5b977c86>
Data.gov Metadata Link*: <http://catalog.data.gov/harvest/object/9216aafb6406/html>

*If the metadata has been updated and reharvested after publication of this report, the dataset may be searched for manually in Data.gov or GeoPlatform.gov

Created: 2015/12/31



2015-2016: A-16 National Geospatial Data Asset (NGDA) Portfolio Summary Report

Federal Geographic Data Committee (FGDC)

- ❖ NGDA Dataset Reports
- ❖ Theme Summary Reports
- ❖ A-16 NGDA Portfolio Summary Report
- ❖ GeoPlatform LMA Performance Dashboard

GeoPlatform Performance Dashboard

LMA Services Datasets Help James Irvine

NGDA Lifecycle Maturity Assessment Dashboard

Select a NGDA Dataset Lifecycle Maturity Assessment survey from the drop-down below. The most recent results are displayed by default and show NGDA Dataset maturity levels. You may choose to filter by Theme or Agency using the Selection Type and Selection drop-downs. For more details, click on a rating box (cell) or hover over column headings.

Survey: 2015 Final Survey Results

Filter by A-16 Themes: 0 Selected

Filter by Organizations: 0 Selected

Export: PDF

Dataset	General	Define	Inventory / Evaluate	Obtain	Access	Maintain	Use / Evaluate	Archive	Overall	Theme	Agency
Biota	85	85	80	85	80	85	85	85	85		
1 meter Digital Elevation Model (DEM) - 100M National File	85	85	85	85	85	85	85	85	85	Environment	DOI-USFS
10m Air-merged Digital Elevation Model (DEM) - 100M National File	85	85	85	85	85	85	85	85	85	Environment	DOI-USFS

Next Steps

- ❖ Training (select one):

- ❖ May 3 10-11:30 ET

- Dial-in: 703.648.4848 or 855.547.8255; Code 14602#

- WebEx:

- <https://usgs.webex.com/usgs/j.php?MTID=md21e06852fdc52ce199e82fe24f7a300>

- ❖ May 4 1-3 PM ET

- Dial-in: 703.648.4848 or 855.547.8255; Code 14602#

- WebEx:

- <https://usgs.webex.com/usgs/j.php?MTID=mfd77a943149b7d9b9b3f01e067fb0da4>

- ❖ LMA Timeframe: Open May 8, 2017 to Aug 4, 2017

- ❖ LMA Analysis and NGDA Reports: Fall 2017