

Cadastral Subcommittee

July 2017

Don Buhler

Bob Ader

Blair Parker



PLSS Update

BLM Continues to conduct updates on federal lands

- ❖ Adding density and content in areas of special surveys for example mineral claims and small holding claims
- ❖ Improving data on Indian Reservations and in special project areas such as proposed mineral withdrawals and sage brush protection areas
- ❖ Adding control and new surveys

The Parcel Fabric is the PLSS maintenance tool and migration to the format for the parcel fabric is ongoing

PLSS Update

Parcel Fabric Migration

- ❖ Completed for all western states except California, Idaho, and the Dakotas
- ❖ Oregon/Washington and Alaska are not in the current migration schedule
- ❖ Michigan, Wisconsin, Minnesota completed
- ❖ Florida is in progress
- ❖ Arkansas, Missouri, Mississippi are next

PLSS CadNSDI continues to be the publication format

- ❖ Change Management Team is an active group providing guidance on the use and application of the standards in the Parcel Fabric and the PLSS CadNSDI

BLM Navigator

PLSS CadNSDI Publication on Navigator is nearly complete

- ❖ Metadata guidelines and procedures are completed and most states have developed publishing metadata
- ❖ Nationalcad.org link points to navigator where data are available

BLM Navigator

BLM Internal			Navigator Indexed Record Count 6 Month Accumulating Totals					
State	Last Period Change		Jun. 2017	May 2017	Apr 2017	Mar 2017	Jan 2017	Dec 2016
National	-1%	-1,241	168,838	170,079	172,000	151,000	190,000	188,000
AK	0%	4	2,338	2,334	2,000	2,000	2,000	2,000
AZ	2%	29,264	1,271,777	1,242,513	1,200,000	1,100,000	816,000	810,000
CA	0%	12,925	3,145,288	3,132,363	3,000,000	2,900,000	2,800,000	2,800,000
CO	2%	55,095	2,973,815	2,918,720	2,600,000	2,900,000	2,800,000	2,800,000
ES	0%	0	9,882	9,882	9,000	9,000	180,000	353,000
ID	14%	2,481	17,898	15,417	12,000	10,000	8,000	8,000
MT	6%	28,264	495,047	466,783	466,000	466,000	466,000	466,000
NM	0%	0	27	27	31	9,000	9,000	8,000
NV	5%	2	42	40	44	3,000	2,000	2,000
OR	0%	4,184	5,342,009	5,337,825	3,200,000	3,000,000	4,000,000	4,000,000
UT	8%	19	252	233	233	227	220	218
WY	0%	165	162,726	162,561	170,000	113,000	112,000	112,000
Total	1%	131,162	13,589,939	13,458,777	10,831,308	10,663,227	11,385,220	11,549,218

BLM Navigator

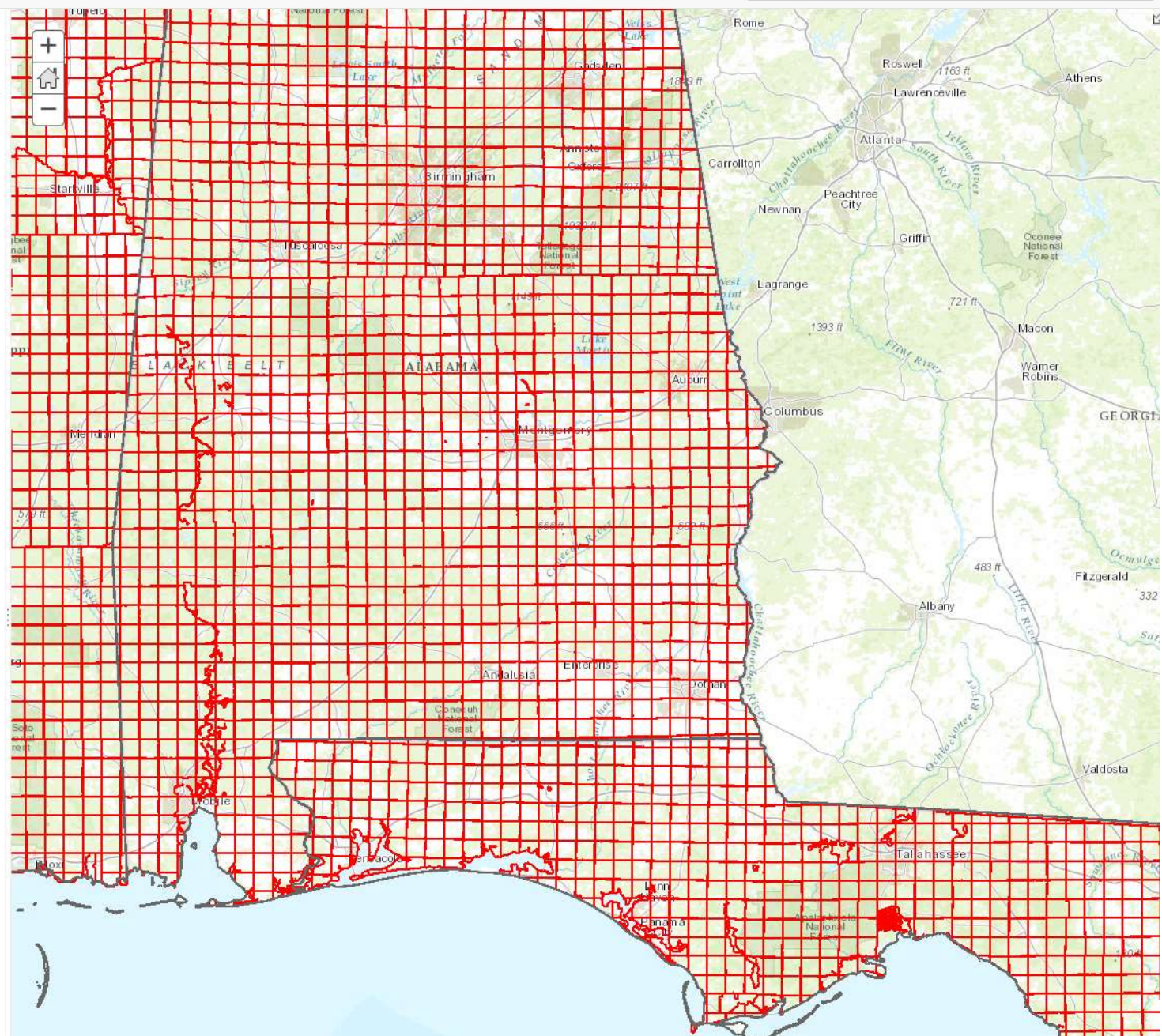
Last year an Interim Solution PLSS Map Service was put in place until the official BLM National Cadastral Reference was stood up in BLM GIS External Production ArcGIS Server. As of July 15, 2017 the feature service is fully deployed.

BLM National PLSS CadNSDI

https://gis.blm.gov/arcgis/rest/services/Cadastral/BLM_Natl_PLSS_CadNSDI/MapServer

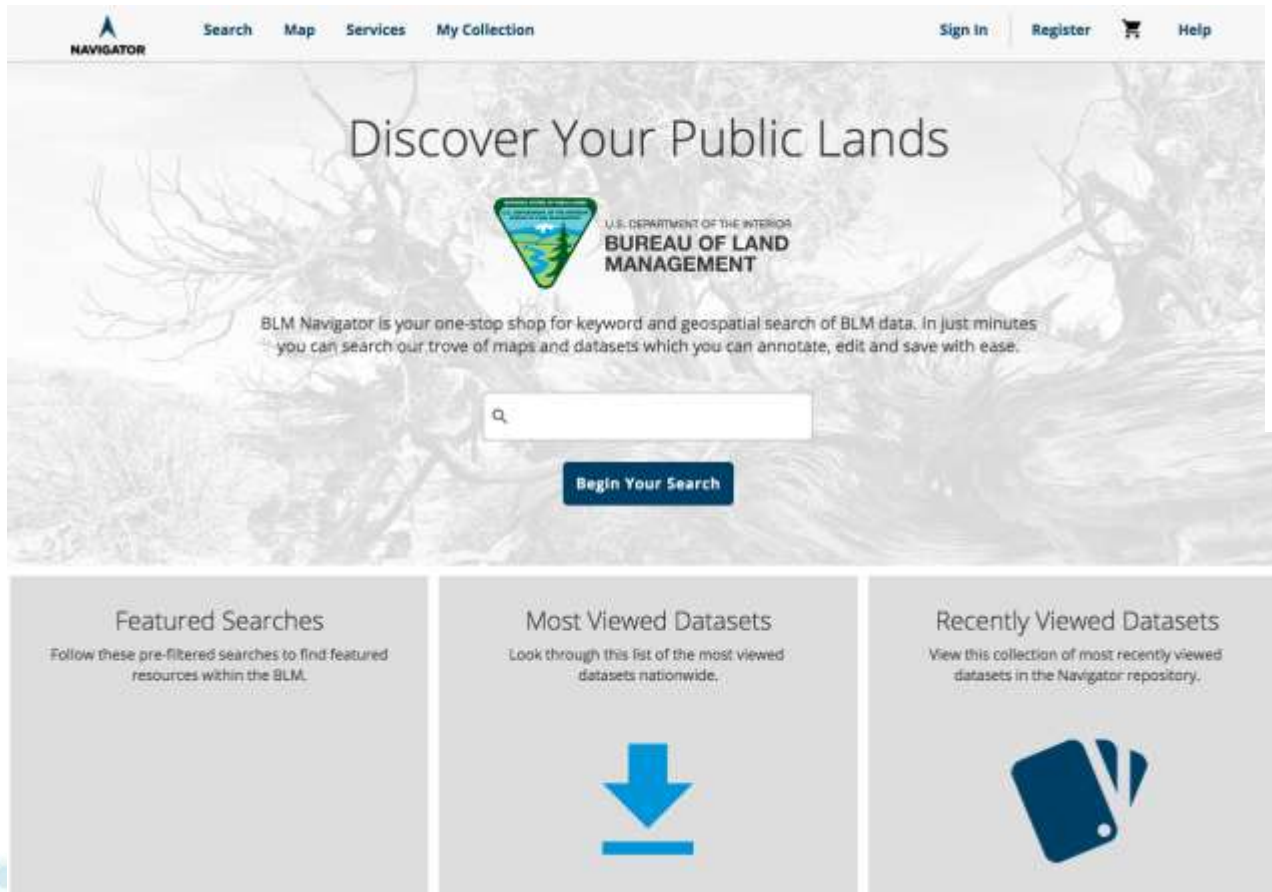
Contents

- BLM Natl PLSS CadNSDI
- State Boundaries
- PLSS Township
- PLSS Section
- PLSS Intersected
- Topographic



BLM Navigator

<https://navigator.blm.gov/home>



The screenshot shows the BLM Navigator website home page. At the top, there is a navigation bar with links for 'Search', 'Map', 'Services', and 'My Collection' on the left, and 'Sign In', 'Register', a shopping cart icon, and 'Help' on the right. The main heading is 'Discover Your Public Lands' with the BLM logo and 'U.S. DEPARTMENT OF THE INTERIOR BUREAU OF LAND MANAGEMENT' below it. A central text block states: 'BLM Navigator is your one-stop shop for keyword and geospatial search of BLM data. In just minutes you can search our trove of maps and datasets which you can annotate, edit and save with ease.' Below this is a search input field with a magnifying glass icon and a 'Begin Your Search' button. The bottom section features three columns: 'Featured Searches' with a sub-description, 'Most Viewed Datasets' with a sub-description and a large blue download arrow icon, and 'Recently Viewed Datasets' with a sub-description and a blue icon of a folder with documents.

You have to type in something to begin your search. PLSS is a good start



Searching Navigator

The screenshot shows the Navigator Search Data interface. At the top, there is a navigation bar with 'Search', 'Map', 'Services', and 'My Collection' tabs, and a user menu with 'Sign In', 'Register', and 'Help' options. The main heading is 'Search Data', with a subtext: 'Navigator allows users to conduct keyword searches and filter results based on categories such as data source or map bounding box.' On the left, there is a map of North America with zoom controls. Below the map are filter options: 'Location', 'Format', and 'Modified Date'. The search bar contains the query 'CadNSDI' and a 'Search' button. Below the search bar, it shows 'Bookmark Query' and 'Clear All Filters'. The results section indicates 'Results: 1 to 10 of 158' and a 'Sort By' dropdown set to 'Relevance'. The first result is titled 'BLM_AZ_CadNSDIv2_01032017.gdb.zip Metadata' with a 'Login to Rate' button. It includes details: 'Format: Compressed Archive File (ZIP)', 'Indexed: 06/03/2017', and 'Relevance: 1.3289084'. The description states: 'Premier created this CadNSDI product from BLM AZSDO Casdral GMM flat files with state edge match.' Below the result are social sharing icons and a 'View More Information' link. The second result is titled 'Cadastral PLSS Standardized Data - Version 2' with a 'Login to Rate' button. It includes details: 'Format: File Geodatabase (FileGDB)' and 'Indexed: 06/07/2017'.

Keywords:
PLSS or
CadNSDI
or
State
Name

Each posting
is the full
geodatabase

Search Data

Navigator allows users to conduct keyword searches and filter results based on categories such as data source or map bounding box.



Filters

Clear All Filters

Location

Clear

- Arizona (14)
- Colorado (131)
- Idaho (9)
- Nevada (37)
- Oregon (1,617)
- California (117)
- Eastern States (143)
- National (15,845)
- New Mexico (24)
- Utah (48)

Q plss

Bookmark Query

Results: 1 to 10 of 143

Sort By:



Relevance ▾

BLM ES IN PLSS Point

... (Not yet rated) Login to Rate

PLSSPoint
Metadata

Format: Data in a File Geodatabase (FileGDB Data)

Indexed: 06/07/2017

Relevance: 0.12783098

Description: This data represents the GIS Version of the Public Land Survey System including both rectangular and non-rectangular survey data. The rectangular survey data are a reference system for land tenure based upon meridian, township/range, section,...

View More Information



BLM ES AL PLSS Point

... (Not yet rated) Login to Rate

PLSSPoint
Metadata

This is a search by location – the BLM state offices are listed and the data sets for each state office are then listed.

The map is informational but is not a search input. There are advanced searches on format, date, etc.

Surface Management Agency

Joel Harrington (Washington Office) is the new lead for this data set

Long term plans will integrate and update the PAD-US data set with ongoing coordination with the Census Bureau.

Wildland Fire Support

Completed collection of available Alaska Data Sets

Completed analysis of critical counties for wildland fire data sets

Continuing to provide support for data out reach, collection, review, and WFDSS integration

Partnerships

Utah –

- ❖ shared PLSS editing and update
- ❖ compiles and publishes surface ownership data

Montana –

- ❖ State is currently making updates but this will likely transition to a shared effort

Nebraska and New Mexico–

- ❖ beginning discussions on shared maintenance

Eastern States

- ❖ Louisiana will provide geo-referenced plats for data set updates
- ❖ Other states are collecting control to update data sets