

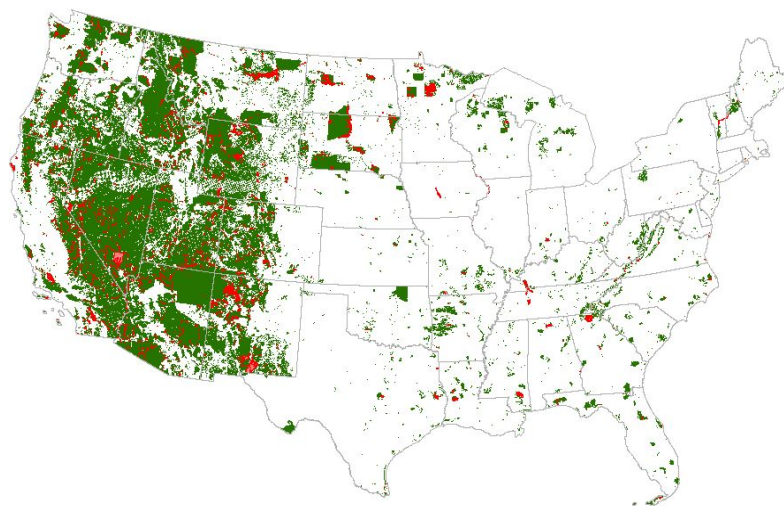
FGDC Federal Lands Workgroup

Geospatial and realty professionals from land management (USFS, BLM, NPS, FWS, BOEM, BIA, USBR, NRCS and DoD) and other federal agencies (USGS, Census, NWCG) are working to **integrate land ownership and management boundaries to fulfill common agency needs.**

Formed in October 2011, the FGDC Federal Lands Workgroup is a subgroup of the Boundary Working Group, focused on the **development and annual publication of a cadastral geodatabase of aggregated federal lands.**

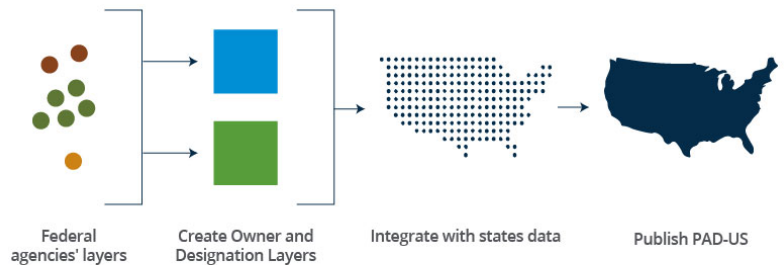
FY 2016-17 Goals:

- Automate the translation of authoritative source data into the PAD-US format
- Contribute to the next PAD-US update, published by USGS
- Assess and improve inventory completeness
- Assess and improve the compatibility of core attributes between agency datasets
- Identify and correct major boundary overlaps to produce a 'flat' ownership file
- Share FLWG goals and accomplishments through outreach



Slivers in red represent areas where federal land boundaries (green) overlap. Legitimate overlaps are accepted while discrepancies are edited in source data to prevent reoccurrence.

Integrating Federal Lands into PAD-US



The Workgroup's procedures enable the compilation of protected lands data for all federal agencies into the Protected Areas Database of the United States (PAD-US), published by the USGS Gap Analysis Program.

FY 2016 Accomplishments

- Published aggregated fed lands ownership and management designations in PAD-US 1.4
- Developed a tool to harness review comments regarding fed lands data
- Documented source data translation into PAD-US schema and needs to increase efficiency
- Significantly reduced boundary overlap errors between agency datasets, identified new priorities
- Improved "Agency Name" standard in cooperation with BLM and USGS Board of Geographic Names
- Maintain monthly calls and primary contacts from each federal land management agency

Revised 10/24/2016



FGDC Federal Lands Workgroup Contacts

NAME	ORGANIZATION	EMAIL
Doug Vandegraft, Chair	Bureau of Ocean Energy Management (BOEM)	douglas.vandegraft@boem.gov
Lisa Johnson, Co-Chair	USGS Gap Analysis Program (GAP) - BSU Cooperator	LisaJJohnson@boisestate.edu
Bob Pierce	USGS National Geospatial Program, Chair, Data Coordination Subcommittee	rrpierce@usgs.gov
Bob Ader	Bureau of Land Management (BLM)	bader@blm.gov
Roger Johnson	National Park Service (NPS)	Roger_M_Johnson@nps.gov
Ron Salz	U.S. Fish and Wildlife Service (FWS)	ron_salz@fws.gov
Troy Warburton	U.S. Forest Service (USFS)	trwarburton@fs.fed.us
Barbara Simpson	U.S. Bureau of Reclamation (USBR)	bsimpson@usbr.gov
Madeline Sovich	U.S. Census Bureau (Census)	madeline.sovich@census.gov
Ginny Dickerson	U.S. Army Corps of Engineers (USACE)	Virginia.L.Dickerson@erdc.dren.mil
Beth Wenstrom	Bureau of Indian Affairs (BIA)	beth.wenstrom@bia.gov
David LaBranche	Department of Defense (DoD)	david.f.labranche.civ@mail.mil
Steven Nechero	Natural Resources Conservation Service (NRCS)	steven.nechero@ftw.usda.gov
Andrew Bailey	National Wildfire Coordinating Group (NWCG)	Andrew_Bailey@nps.gov
Mimi D'Iorio	National Oceanic and Atmospheric Administration (NOAA)	mimi.diorio@noaa.gov



US Army Corps of Engineers®



FGDC Federal Lands Working Group

<https://cms.geoplatform.gov/a16govunits/FederalLands>

Doug Vandegraft Douglas.Vandegraft@boem.gov
Chair, FGDC Federal Lands Working Group

Lisa Johnson LisaJJohnson@boisestate.edu
Co-Chair, Federal Lands Working Group