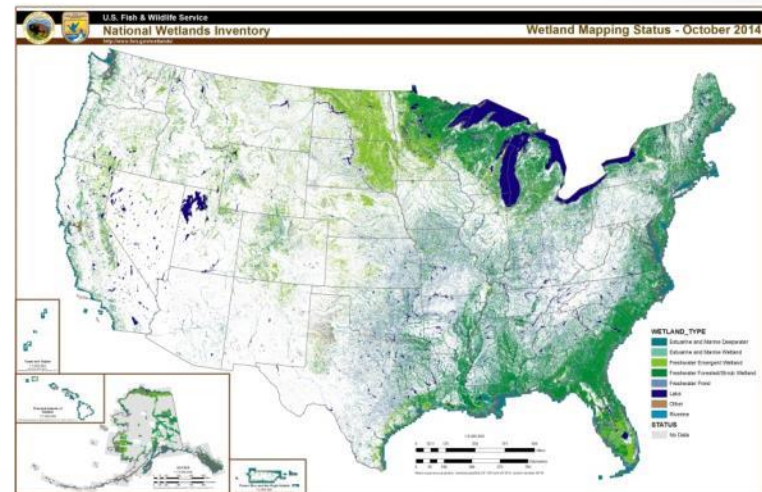




National Wetlands Inventory

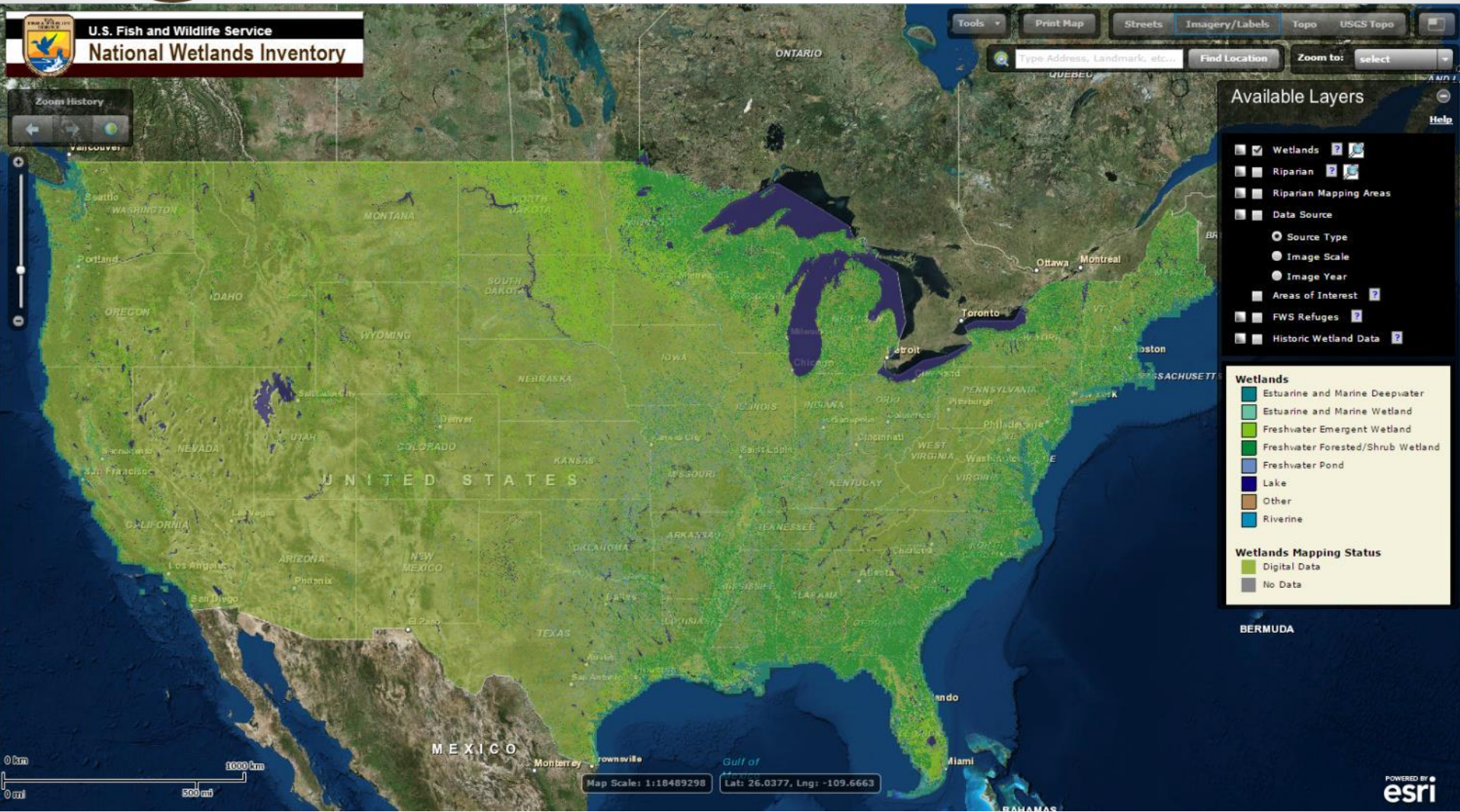
- Emergency Wetland Resource Act of 1986
 - Map wetlands of the U.S. - **National Wetlands Inventory**
 - Provide 10 year Reports – **Wetlands Status and Trends Reports**
- National Geospatial Data Asset (NGDA)
 - Supports mission goals of multiple federal agencies
 - Statutorily mandated
 - Supports Presidential priorities as expressed by OMB
 - OMB Circular A-16 identifies the Wetlands Layer as a National Spatial Data Infrastructure (NSDI) layer
 - Stewards of National Wetland Classification Standard
 - Stewards of the FGDC Wetland Mapping Standard

- Over 20 million polygons
- 40 years and \$220+ million
- Over 165 contributors
- Nearly 1 million website views annually
- 335,000+ Mapper unique users annually
- First DOI application hosted in the Cloud



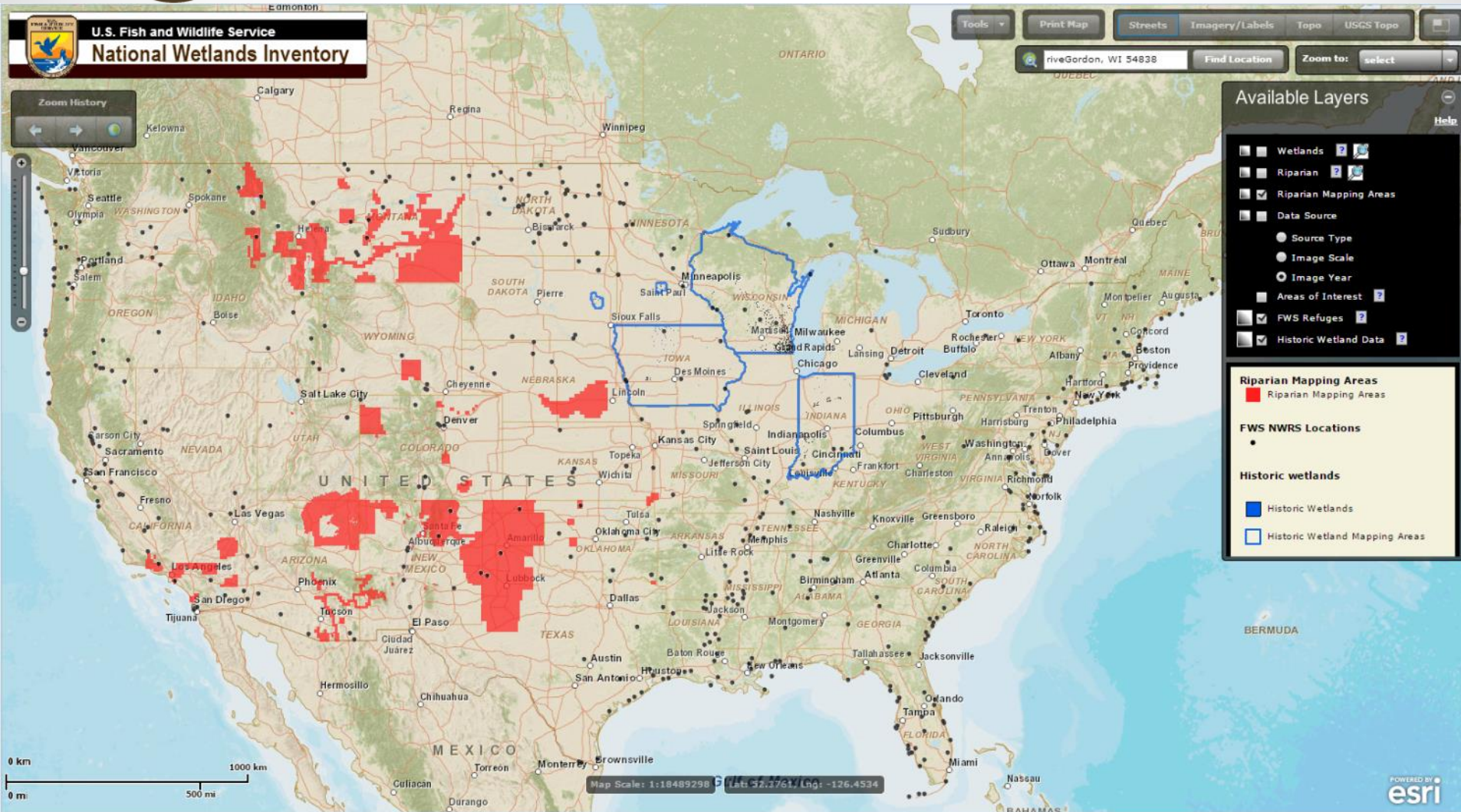


Wetlands Mapper - Layers



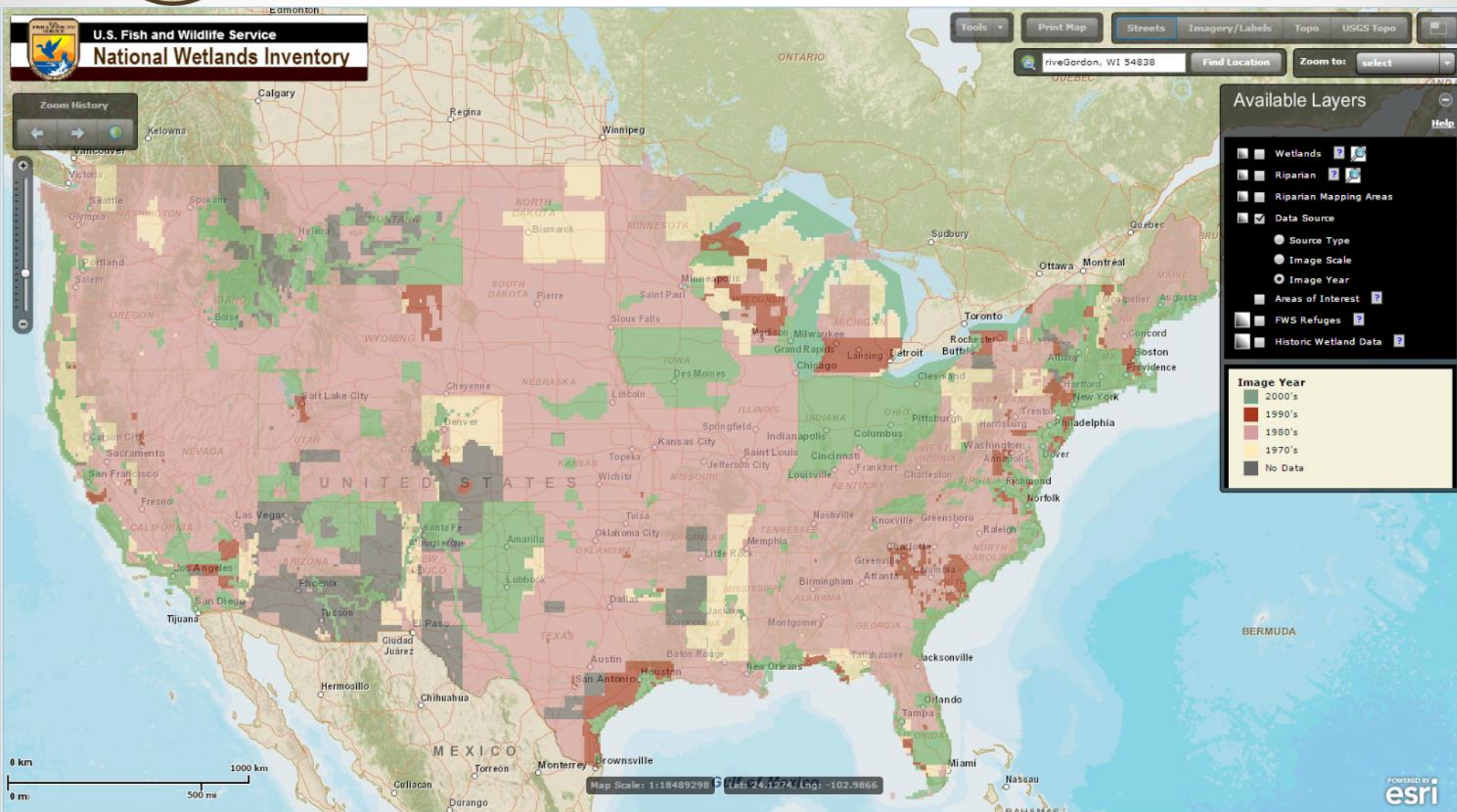


Wetlands Mapper - Layers



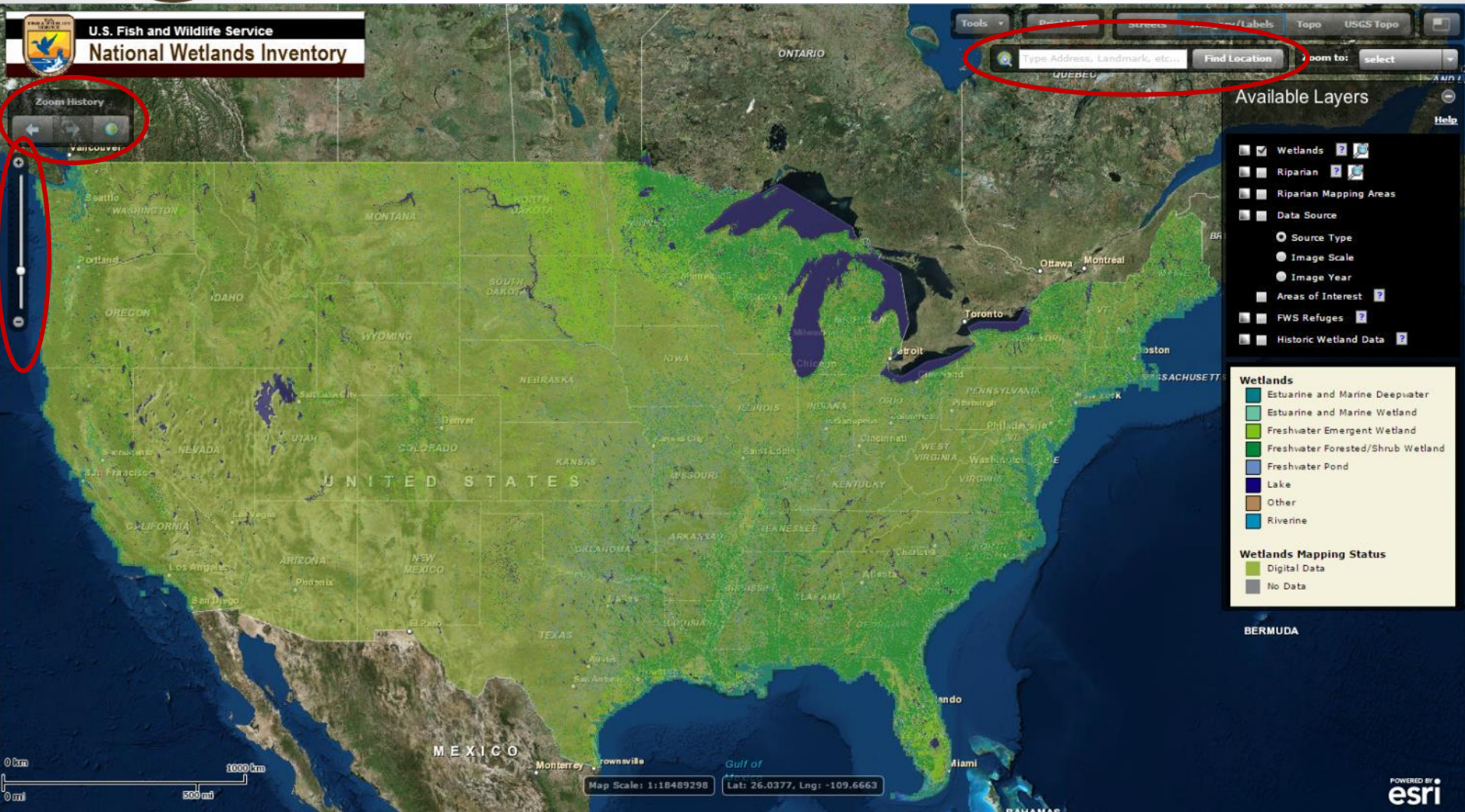


Wetlands Mapper - Layers





Wetlands Mapper - Navigation



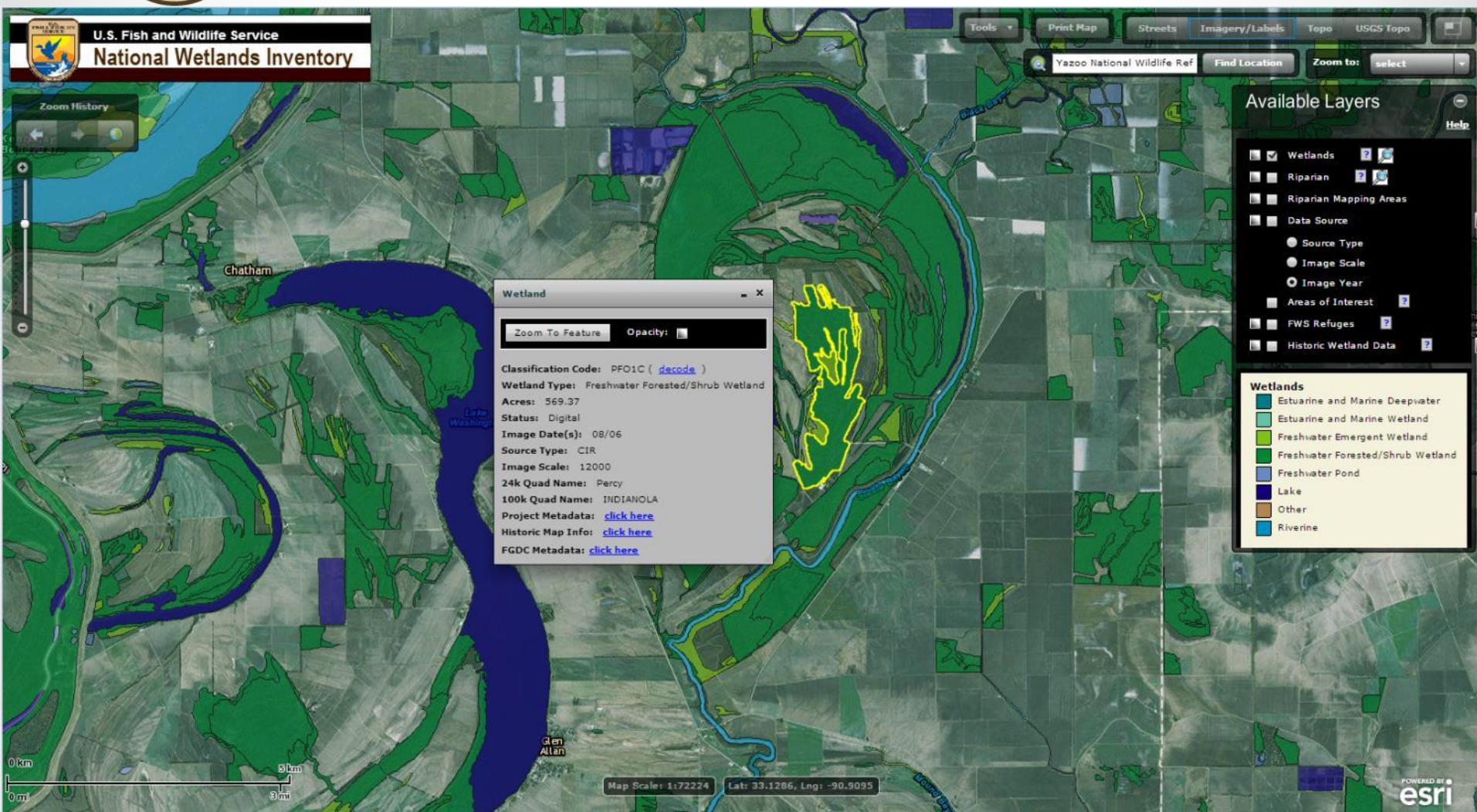


Wetlands Mapper - Navigation






Wetlands Mapper - Navigation





Wetlands Mapper - Navigation





U.S. Fish & Wildlife Service

National Wetlands Inventory

Ecological Services

Enter Classification code: (Example: L1UB1Hx)

For geographically specific information* (optional), please enter a State code: (Example: TX for Texas)

Description for code **PFO1C** :

P System **PALUSTRINE**: The Palustrine System includes all nontidal wetlands dominated by trees, shrubs, emergents, mosses or lichens, and all such wetlands that occur in tidal areas where salinity due to ocean derived salts is below 0.5 ppt. Wetlands lacking such vegetation are also included if they exhibit all of the following characteristics: 1. are less than 8 hectares (20 acres); 2. do not have an active wave-formed or bedrock shoreline feature; 3. have at low water a depth less than 2 meters (6.6 feet) in the deepest part of the basin; 4. have a salinity due to ocean-derived salts of less than 0.5 ppt.

Subsystem :

FO Class **FORESTED**: Characterized by woody vegetation that is 6 m tall or taller.

1 Subclass **Broad-Leaved Deciduous**: Woody angiosperms (trees or shrubs) with relatively wide, flat leaves that are shed during the cold or dry season; e.g., black ash (Fraxinus nigra).

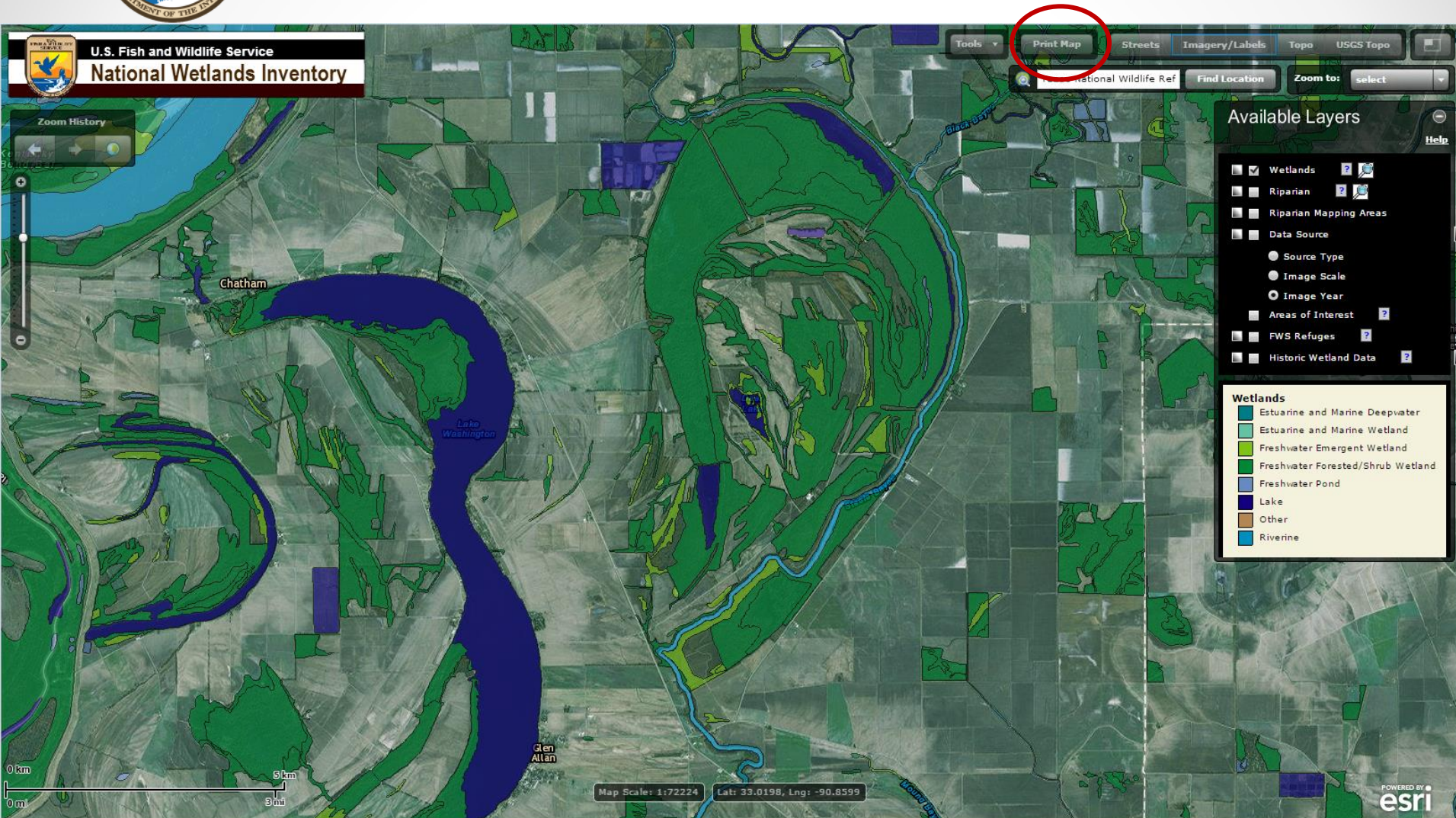
Modifier(s):

C WATER REGIME **Seasonally Flooded**: Surface water is present for extended periods especially early in the growing season, but is absent by the end of the growing season in most years. The water table after flooding





Wetlands Mapper - Print





Wetlands Mapper - Print

Wetlands Mapper



[close form](#)

Print Options

Title:

Remarks:

Print Ready. Fill out the form to title and add remarks.



Wetlands Mapper - Print

Wetlands Mapper



U.S. Fish and Wildlife Service

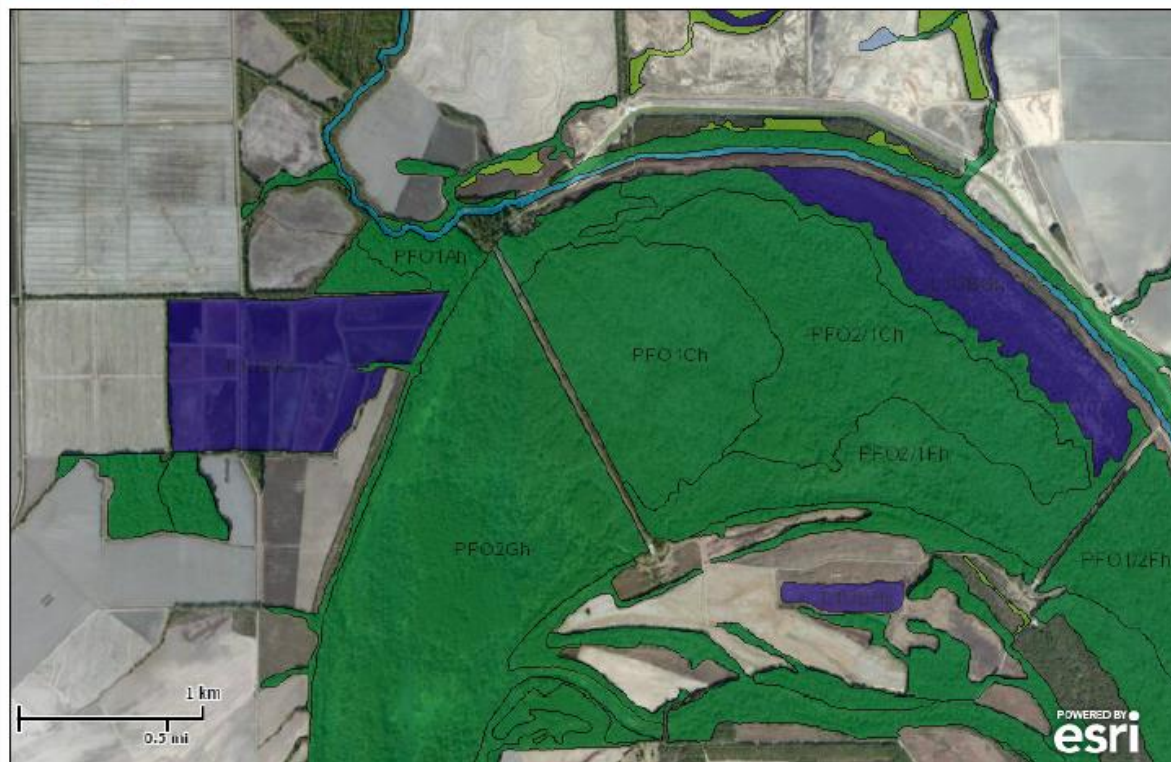
National Wetlands Inventory

Yazoo NWR

Mar 4, 2015

Wetlands

- Freshwater Emergent
- Freshwater Forested/Shrub
- Estuarine and Marine Deepwater
- Estuarine and Marine
- Freshwater Pond
- Lake
- Riverine
- Other



This map is for general reference only. The US Fish and Wildlife Service is not responsible for the accuracy or currentness of the base data shown on this map. All wetlands related data should be used in accordance with the layer metadata found on the Wetlands Mapper web site.

User Remarks:

Waterfowl habitat management ponds.

Options

NWR

owl habitat
ement ponds.

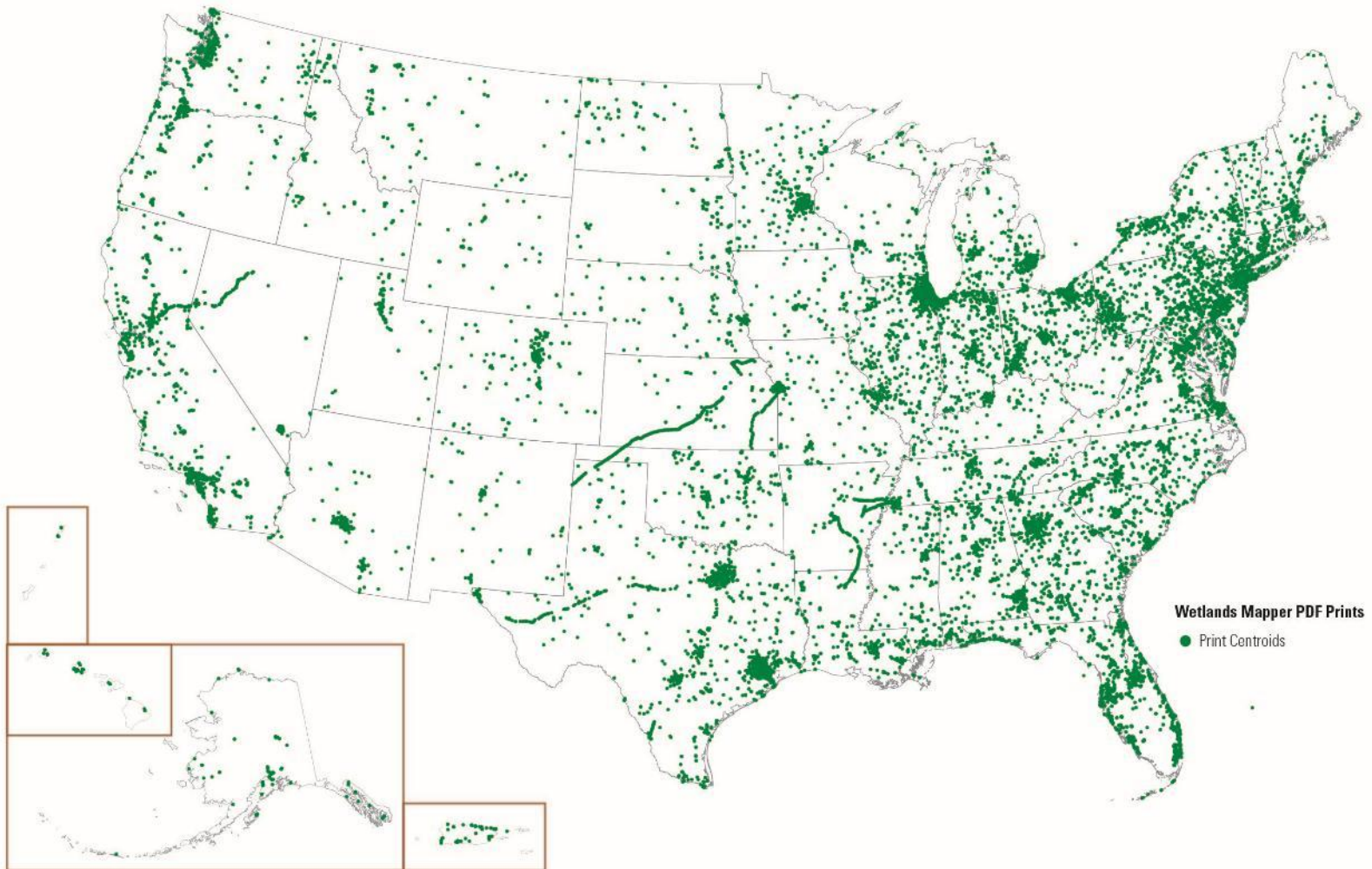
nit

form to title and add



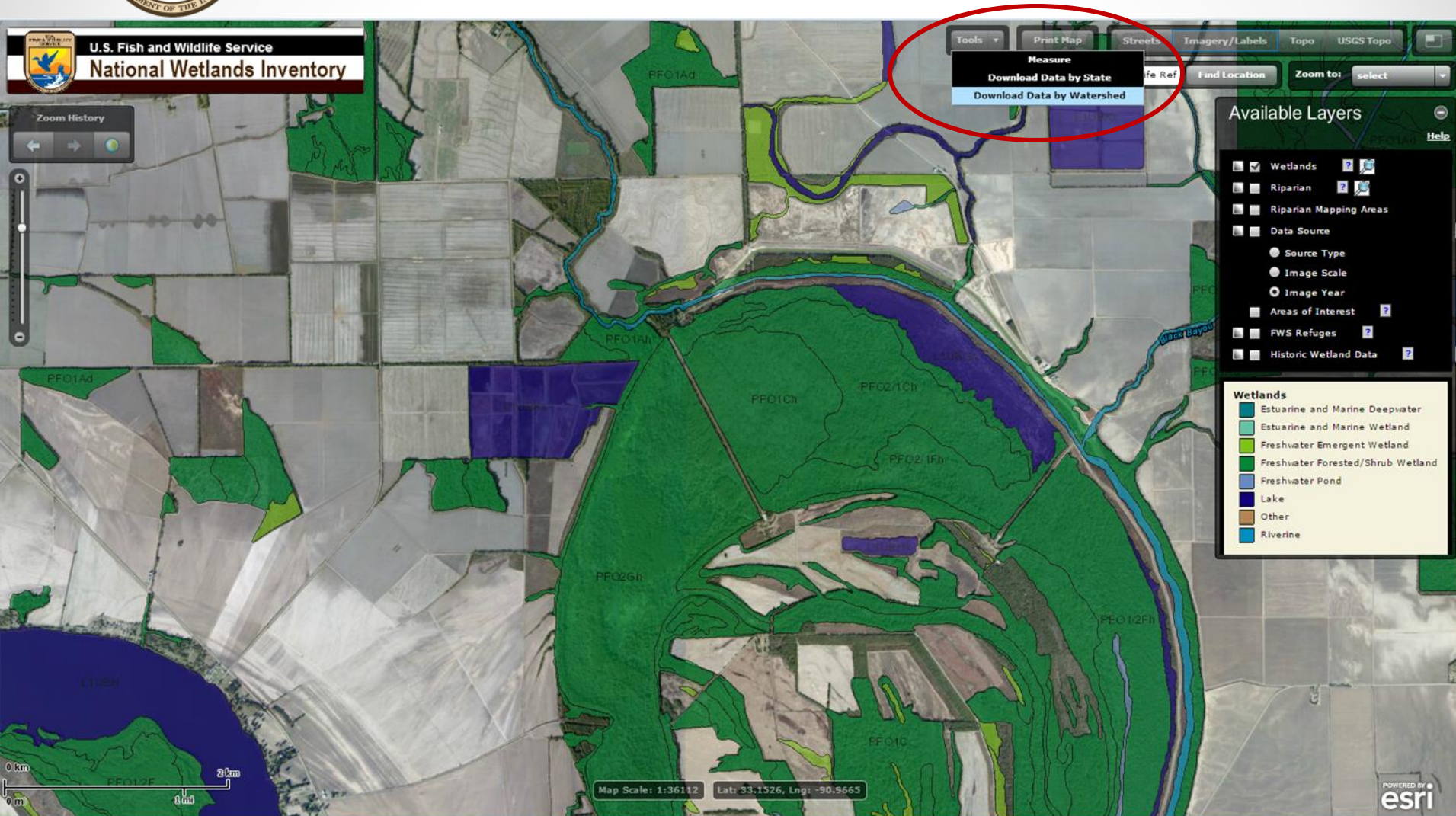
Wetlands Mapper – Print

13,947 Maps Printed – Feb 2015





Wetlands Mapper - Data





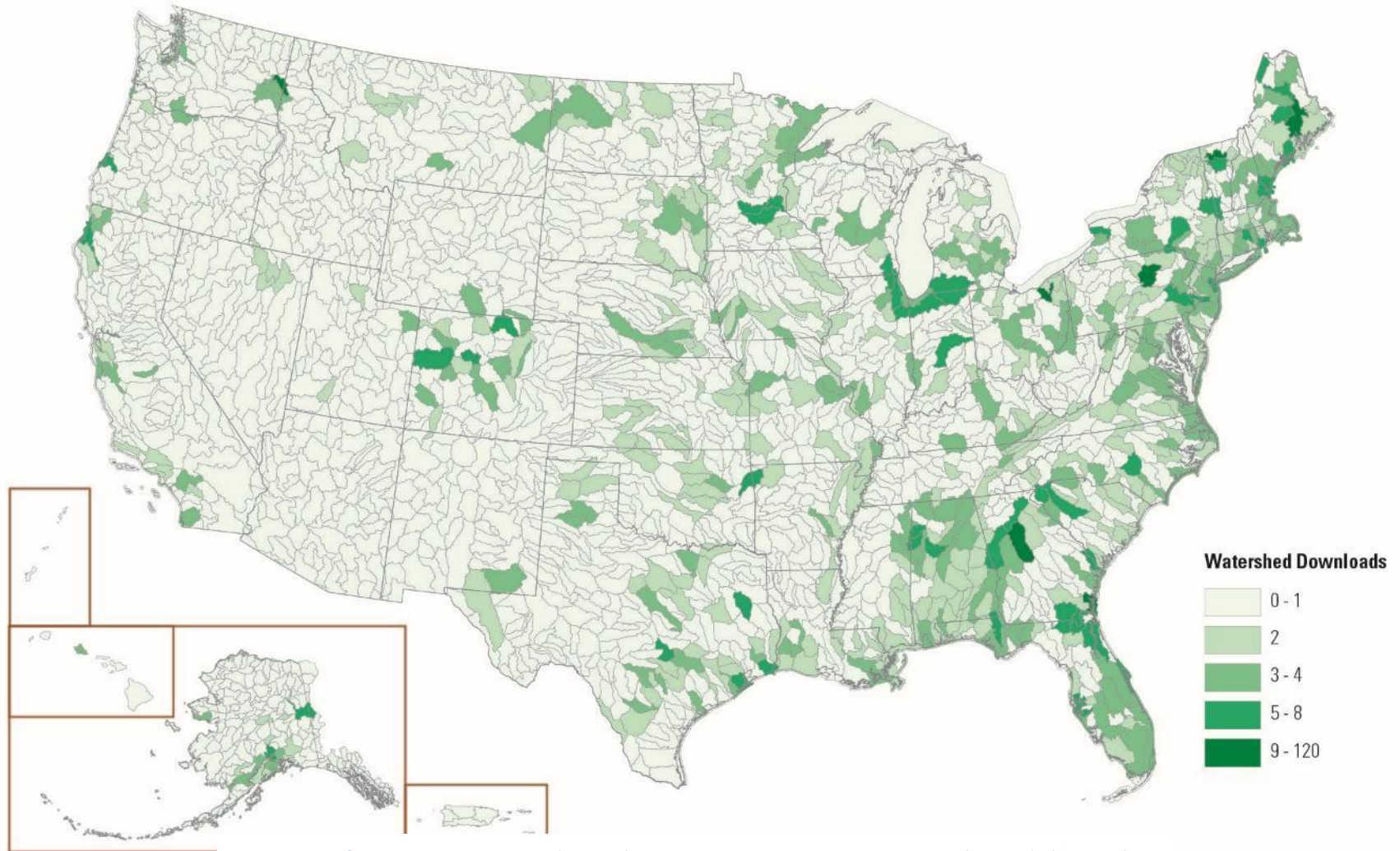
Wetlands Mapper - Data





Wetlands Mapper – Data

952 Watershed Downloads – Feb 2015



www.fws.gov/wetlands/Data/Data-Download.html



Wetlands Mapper - Data



U.S. Fish & Wildlife Service

National Wetlands Inventory

Ecological Services

Search NWI Site

[Home](#) | [Wetlands Data](#) | [Status and Trends](#) | [Wetlands Layer](#) | [Other Topics](#) | [National Wetlands Inventory](#) | [Contact Information](#)

Download Seamless Wetlands Data by State

Before You Begin

- Each State data download is available as either a compressed file [Geodatabase](#) or a [Shapefile](#). Both files are compressed by using the [.zip](#) format and contain the following layers:

- Wetlands polygon data
- Wetlands Project Metadata (includes image dates and project information)
- Wetlands Historic Map Information*
- Riparian polygon data*
- Riparian Project Metadata (includes image dates and project information)*
- Historic Wetlands*
- Historic Wetlands Project Metadata (includes image dates and project information)*

* If available at the requested location Information about each of these layers can be found on our [Metadata](#) page.

- Not all of Alaska has been digitally mapped by the U.S. Fish and Wildlife Service. Please refer to the Wetlands Mapper Wetlands Mapping Status layer to view where wetlands have been mapped in Alaska. The state downloads include a Wetlands Project Metadata layer that identifies where and when wetlands were mapped within the state.
- NOTE:** Due to the variation in use and analysis of this data by the end user, each of states wetlands data extends beyond the state boundary. Each state includes wetlands data that intersect the 1:24,000 quadrangles that contain part of that state (1:2,000,000 source data). This allows the user to clip the data to their specific analysis datasets. Beware that two adjacent states will contain some of the same data along their borders.

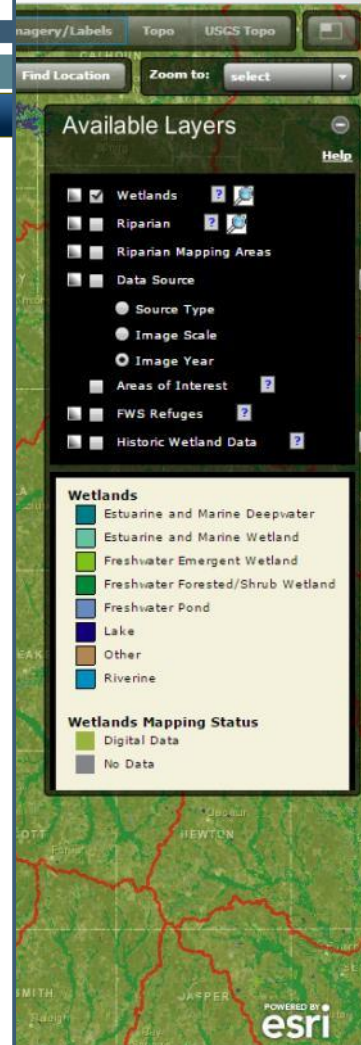
Downloading Tips

- If an error occurs during your download, or if your downloaded file(s) is corrupted, we strongly recommend the use of a download manager. Please visit the [Frequently Asked Questions](#) page for more information on this topic. For security reasons, we are not allowed to served data via FTP.
- Due to the amount of data being downloaded, the resulting time to download each file may take up to 60 minutes or more, and each file can range in sizes from 1MB to approximately 1GB.

State Downloads (file downloads last updated October 6, 2014)

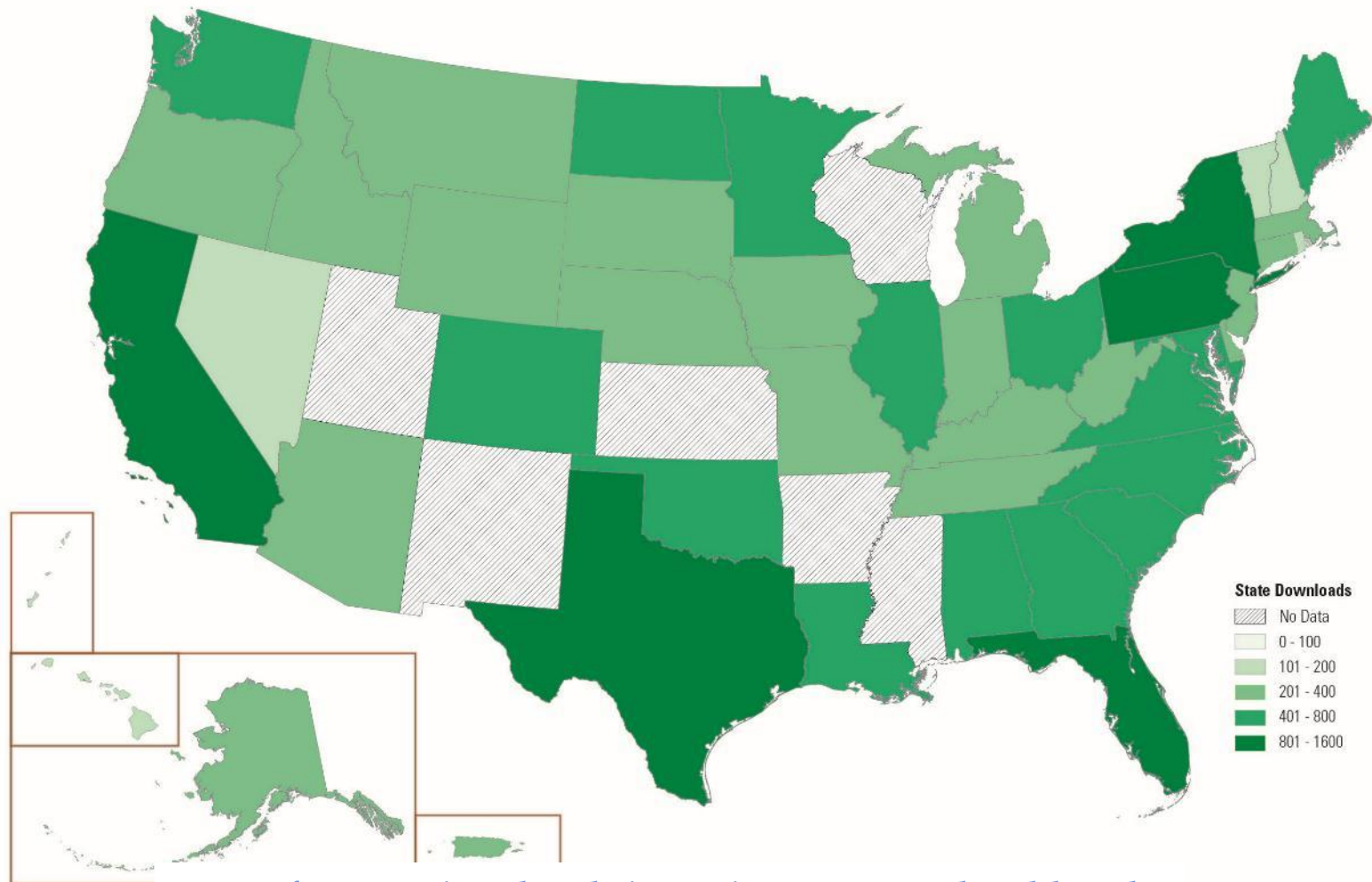
State	Download Type		State	Download Type	
Alabama	Geodatabase	Shapefile	Nebraska	Geodatabase	Shapefile
Alaska	Geodatabase	Shapefile	Nevada	Geodatabase	Shapefile
Arizona	Geodatabase	Shapefile	New Hampshire	Geodatabase	Shapefile
Arkansas	Geodatabase	Shapefile	New Jersey	Geodatabase	Shapefile
California	Geodatabase	Shapefile	New Mexico	Geodatabase	Shapefile
Colorado	Geodatabase	Shapefile	New York	Geodatabase	Shapefile

www.fws.gov/wetlands/Data/Data-Download.html





Wetlands Mapper – Data 20,850 State Downloads - 2014

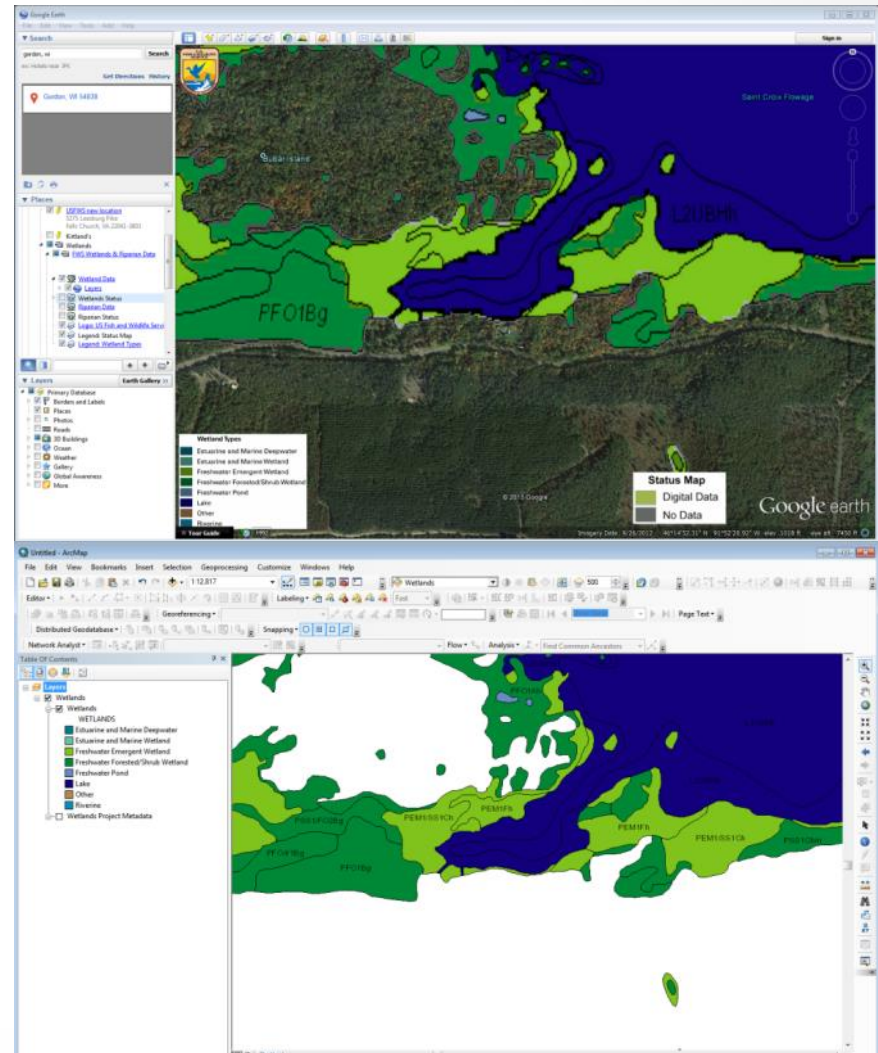


www.fws.gov/wetlands/Data/Data-Download.html



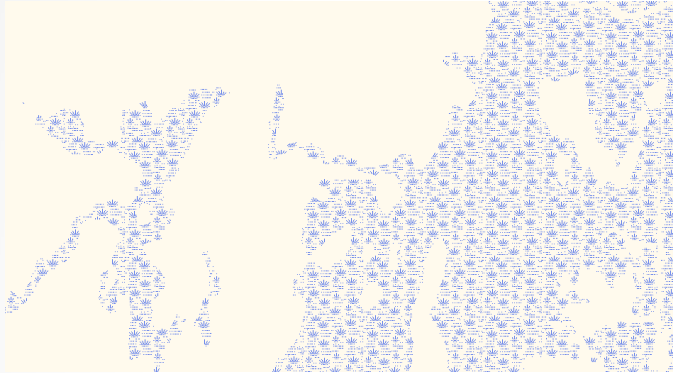
Wetlands Mapper – Map Services

- Google Earth – KML
- Web Mapping Service – WMS
- Rest Services
 - FWS – IPAC system
 - EPA NEPAAssit system
 - USGS National Map
 - USGS US Topo
 - GeoSpatial Platform.gov
 - Data.gov
 - ESRI ArcGIS Online
 - GIS User's – Desktop Software
 -

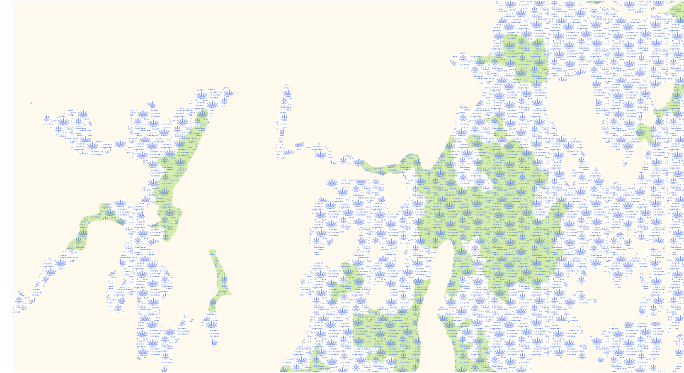




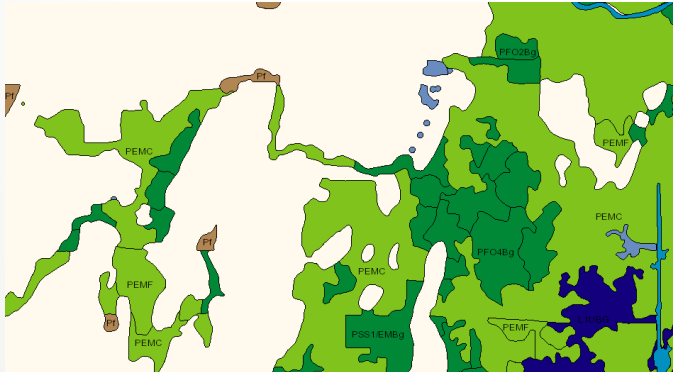
Wetlands Services



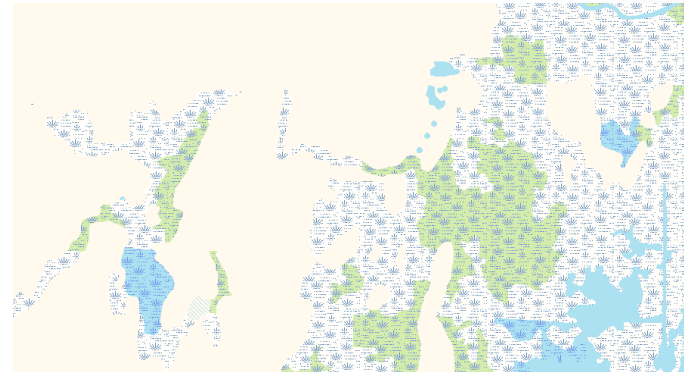
Symbol Service



Topo Service



Mapper Service



Complete Topo Service

<http://107.20.228.18/ArcGIS/rest/services>



Wetlands Publications and Reports



U.S. Fish & Wildlife Service

National Wetlands Inventory

Ecological Services

Document Search Engine

Enter one or more words to search for documents. Documentation about the topics, document categories, and status choices, is available [here](#) (PDF). This page contains links to .PDF documents that may not be fully accessible. If you need help with accessing a document please call: 608-238-9333 or email at: wetlands_team@fws.gov.



Search for: Results per page:

Match: ☒ any search words ☐ all search words

Category: ☐ All ☒ Documents ☐ Website Pages

Status: Topic: Document Category:

Document ID:

Search results for: Status and Trends in category "Documents"

71 results found containing all search terms. 5 results found containing some search terms.

8 pages of results.

Sorted by relevance / [Sort by date](#)

1. [Technical Procedures for Conducting Status and Trends of the Nation's Wetlands](#) [Documents]

Status: Current

Topic: Status and Trends

Doc. Category: Technical Document or Procedure Manual

Document ID: 904200931

... , Procedures, Conducting, Status, Trends, Nation's, ... Wetlands Thomas E. Dahl and Mitchell T. Bergeson ...

Terms matched: 3 - 1 Mar 2009 - 1k - URL: <http://www.fws.gov/wetlands/Documents/Technical-Procedures-for-Conducting-Status-and-Trends-of-the-Nations-Wetlands.pdf>

2. [Status and Trends of Wetlands in the Conterminous United States 2004 to 2009](#) [Documents]

Status: Current

Topic: Status and Trends

Doc. Category: Scientific Publication Journal or Text

Document ID: 1110061107

... Status, Trends, Wetlands, Conterminous, United States ... Status and Trends of Wetlands in the Conterminous United States ... to 2009 ...

Terms matched: 3 - 1 Jan 2011 - 1k - URL: <http://www.fws.gov/wetlands/Documents/Status-and-Trends-of-Wetlands-in-the-Conterminous-United-States-2004-to-2009.pdf>

3. [Technical Procedures for Wetlands Status and Trends](#) [Documents]

Status: Archive

Topic: Status and Trends

Doc. Category: Technical Document or Procedure Manual

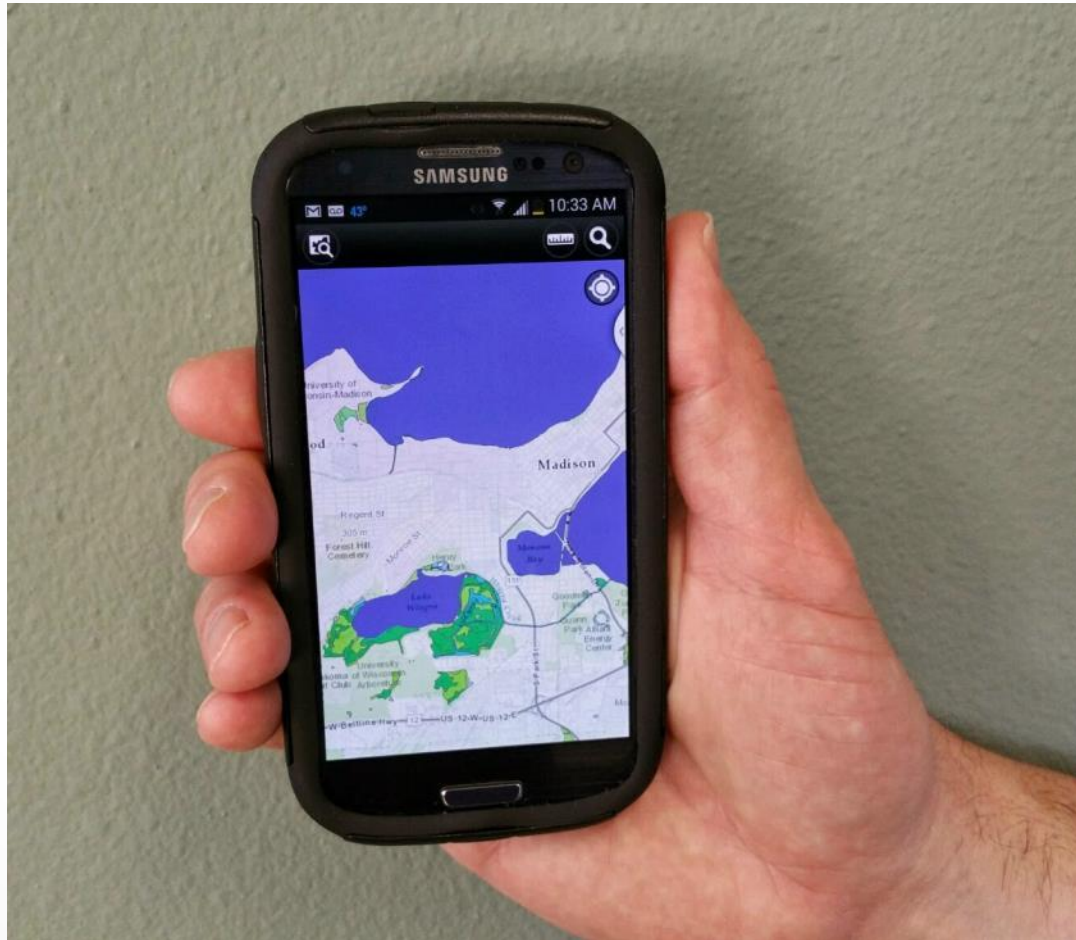
Document ID: 904200930

... , Procedures, Wetlands, Status, Trends ...

Terms matched: 3 - 1 Dec 2004 - 1k - URL: <http://www.fws.gov/wetlands/Documents/Technical-Procedures-for-Wetlands-Status-and-Trends.pdf>



Wetlands Mobile App



Coming Soon



Contribute Wetlands Data



U.S. Fish & Wildlife Service

National Wetlands Inventory

Ecological Services

 Search NWI Site[Home](#)[Wetlands Data ↓](#)[Status and Trends ↓](#)[Wetlands Layer ↓](#)[Other Topics ↓](#)[National Wetlands Inventory](#)[Contact Information ↓](#)

Contributed Data: Contribute your Data to the Wetlands Master Geodatabase

Introduction

Organizations or individuals have the opportunity to contribute wetlands data to the wetlands geospatial data layer maintained by the U.S. Fish and Wildlife Service. The wetlands data layer is the featured layer on the [Wetlands Mapper](#), is a National Geospatial Data Asset (NGDA) dataset designated by OMB Circular A-16 and the Federal Geographic Data Committee (FGDC) and is registered through [Geoplatform.gov](#) and [Data.gov](#).

The Service will provide proper acknowledgement of all [data contributors](#) and maintain data integrity consistent with DOI policy.

Data Submission

Because the Wetlands Master Geodatabase is a national data set, certain standards must be met before the data can be added. However, if you do not have the ability or resources to make your data meet these standards the Service may be able to assist in data conversions or modification.

The Wetlands data standards for acceptance into the Wetlands Master Geodatabase (MGD) are as follows:

- The data should comply with the [Wetlands Mapping Standards](#).
- Properly project all data. The projection for wetlands is the Albers Equal Area Conic Projection and the North American Datum of 1983. [Click here for additional projection information](#).
- ESRI shapefiles and Personal Geodatabases, or File Geodatabases, are the preferred spatial data formats for submission.
- Users are encouraged to verify their wetlands data by downloading and using the [Wetlands Data Verification Toolset](#)
- The Wetlands Master feature class.

www.fws.gov/wetlands/Data/Contributed-Data.html

and added to the polygon

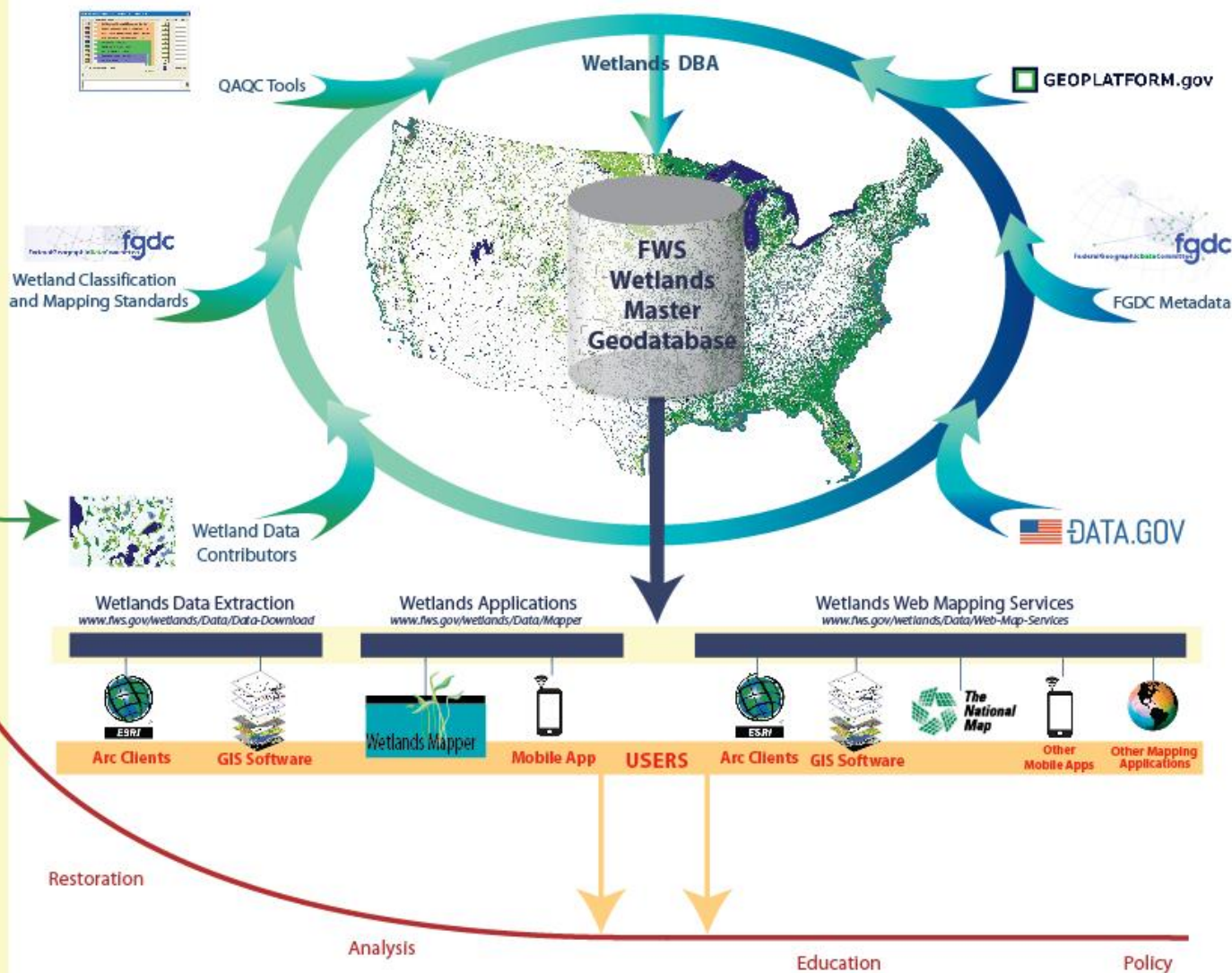
New: The Wetland Mapping Consortium (WMC) Webinar:

"Mapping Standards and Procedures – The NWI and You"

[Part 1](#); [Part 2](#); [Part 3](#)



Wetlands Layer of the National Spatial Data Infrastructure (NSDI) a National Geospatial Data Asset (NGDA)





Internet Searches

Google: NWI

NWI Wetlands

NWI Mapper

Google: NWI Wetlands

Wetlands Mapper

Download data

NWI Wetlands

Wetlands Inventory Data

Google Earth



Questions?

Mitch Bergeson - mitch_bergeson@fws.gov

Jane Harner – jane_harner@fws.gov

www.fws.gov/wetlands/

www.fws.gov/wetlands/Data/Contributed-Data.html