



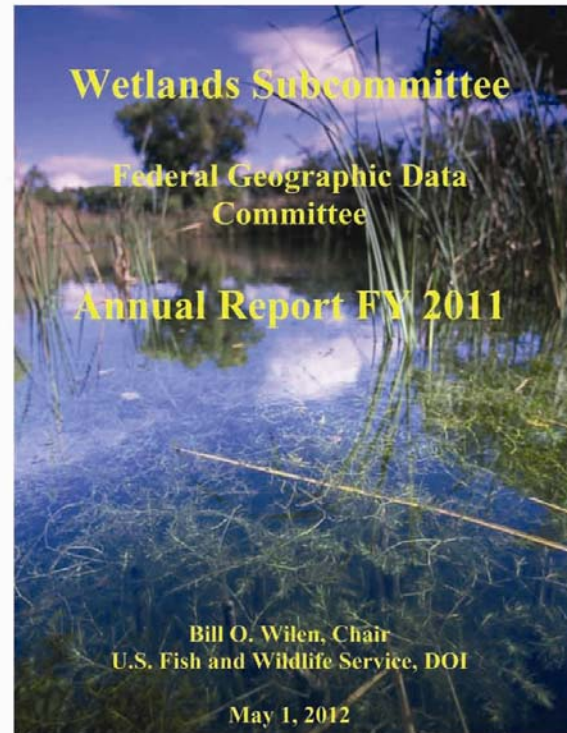
May 8, 2012

Coordination Group Meeting

Wetlands Subcommittee Update to Coordination Group

Bill O. Wilen, Chair
Senior Wetlands Scientist, Fish and Wildlife Service
703-358-2161
bill_wilen@fws.gov

FY 2012 Annual Report



Members Include:

DOC NOAA
DOC NOAA/National Marine
Fisheries Service
DOC NOAA/National Weather
Service
DOC NOAA/National Geodetic
Survey
Department of Defense
DOD U.S. Air Force
DOD U.S. Army
DOD U.S. Army, Corps of Engineers
DOD U.S. Marine Corps
DOD U.S. Navy
Department of Energy
DHS Federal Emergency
Management Agency
Department of Housing and Urban
Development
DOI Bureau of Indian Affairs
DOI Bureau of Land Management
DOI Bureau of Reclamation
DOI National Park Service
DOI Office of Surface Mining
DOI U.S. Fish and Wildlife Service

DOI U.S. Geological Survey
DOT Federal Highway Administration
Environmental Protection Agency
Great Lakes Commission
National Aeronautics and Space
Administration
National Capital Parks Commission
Office of Management and Budget
Tennessee Valley Authority
USDA Farm Services Agency
USDA Forest Service
USDA Natural Resources
Conservation Service
USDA Risk Management Agency
Non-Federal Participants:
Association of State Wetlands
Managers
National Association of Counties
National State Geographic
Information Council
St. Mary's University of Minnesota,
Winona, MN

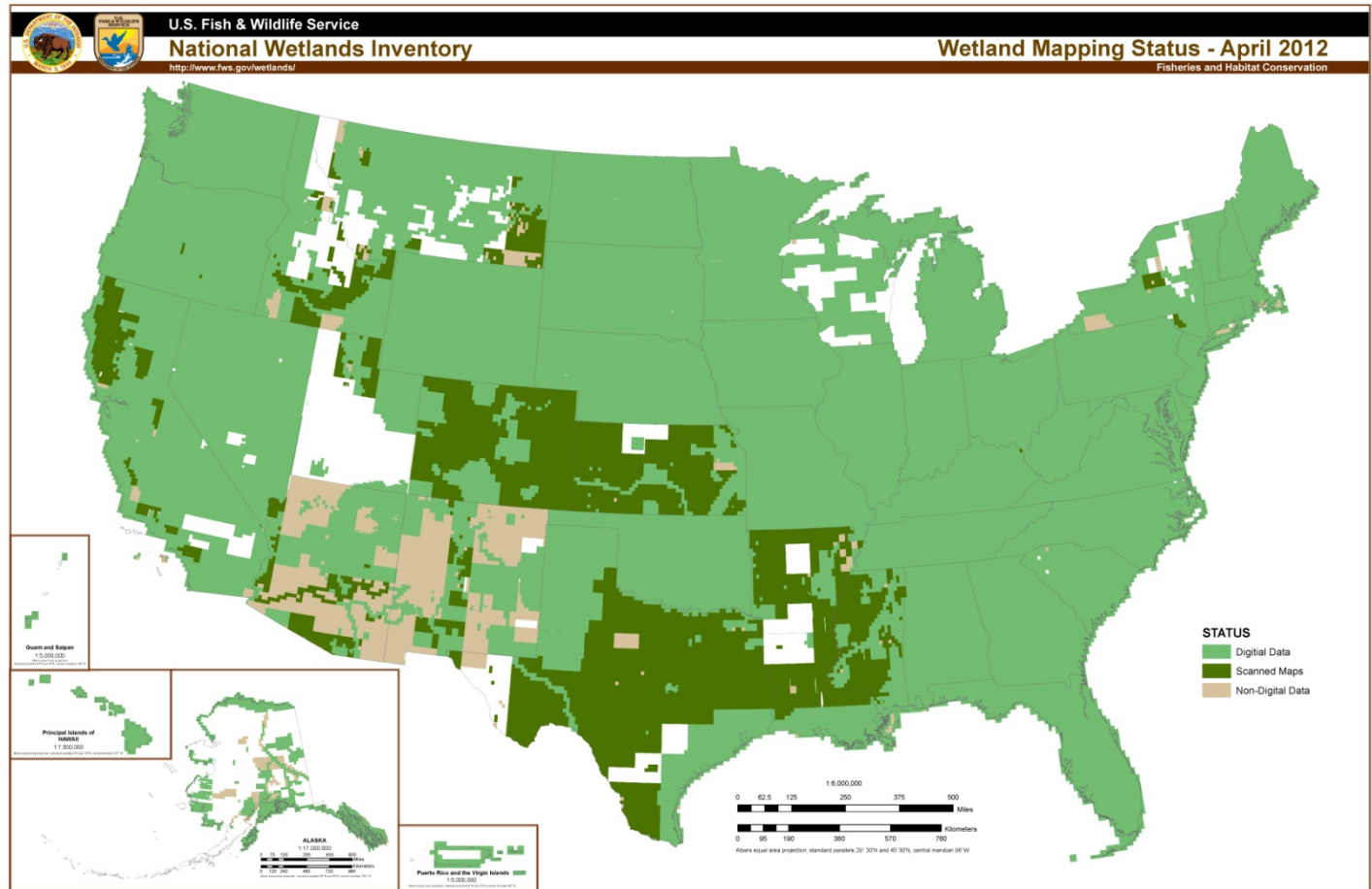


NWI 2011 Scorecard

◆ Users:	60 million online requests
◆ Size:	17 million polygons
◆ Backlog:	\$100 million requested
◆ Past Partners:	100 organizations
◆ Completed:	67% of nation
48-States:	76% Digital; 13% Scans (89% total)
Alaska:	32% Digital
Hawaii, V.I., Guam: & Saipan	100% Digital
Puerto Rico:	67% Digital
◆ Data Updated:	4.1%
◆ Ave. Data Updates:	2.1% (5 year average)
◆ Cumulative Data Adds:	2.6%
◆ Ave. Cumul. Adds:	2.6% (5 year average)



NWI Status Map



NWI Era Maps

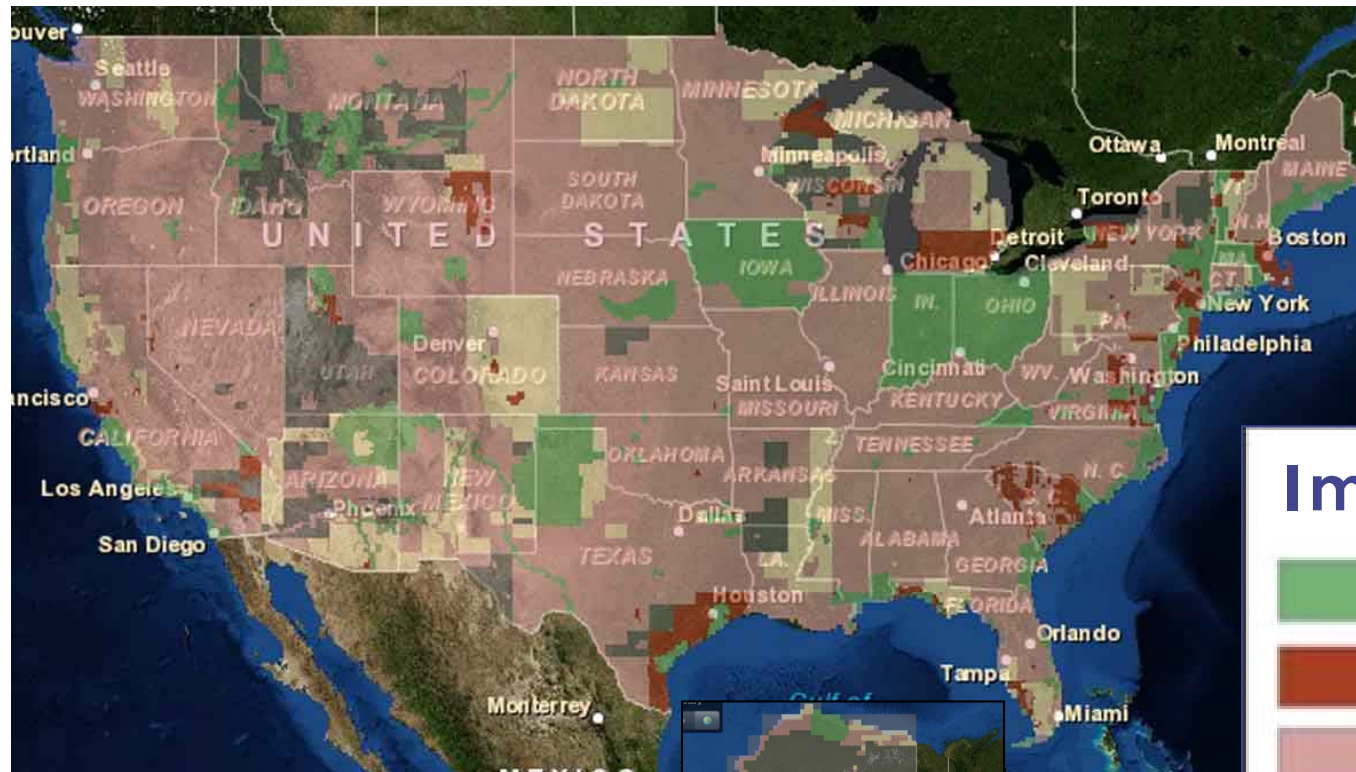
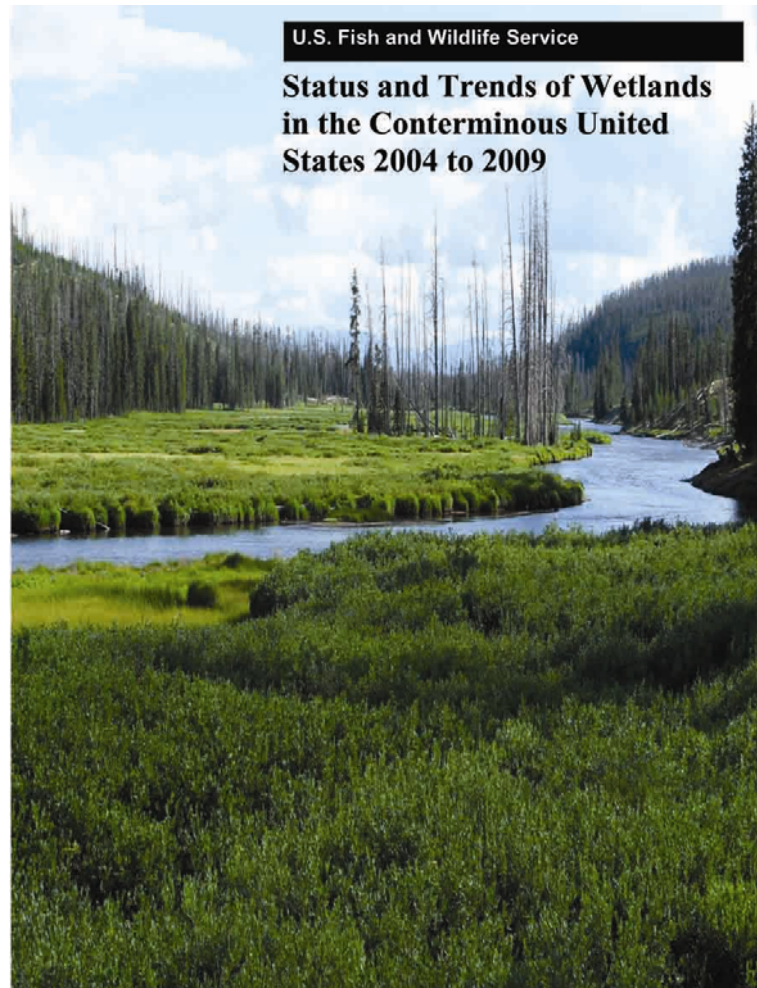


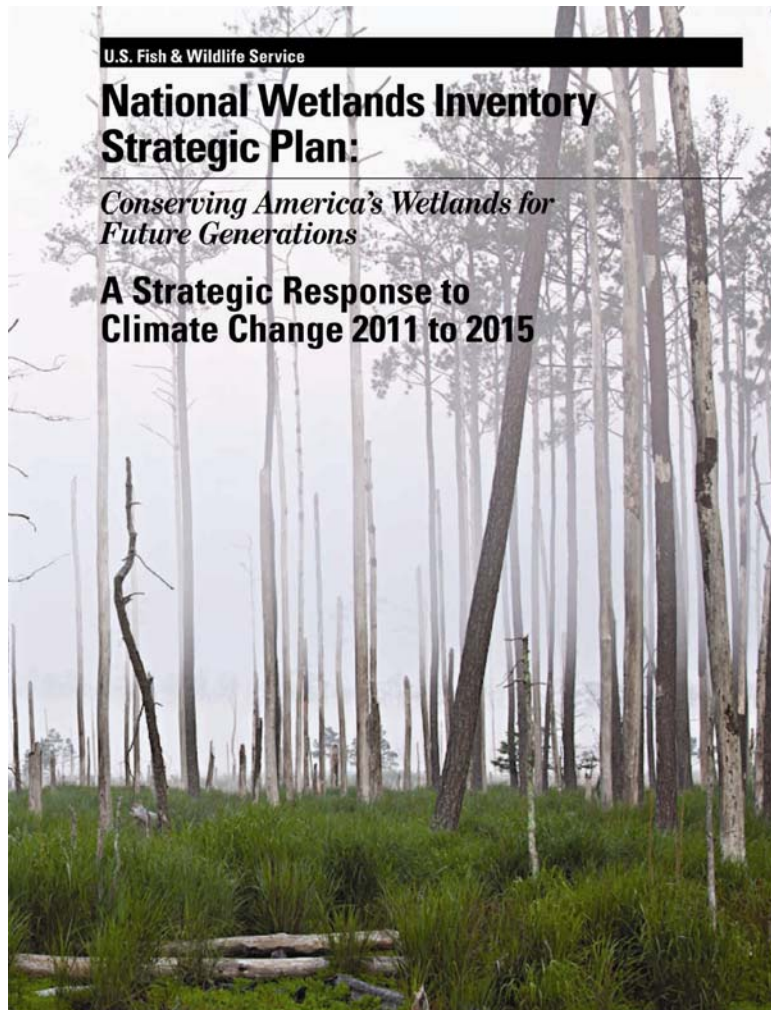
Image Year



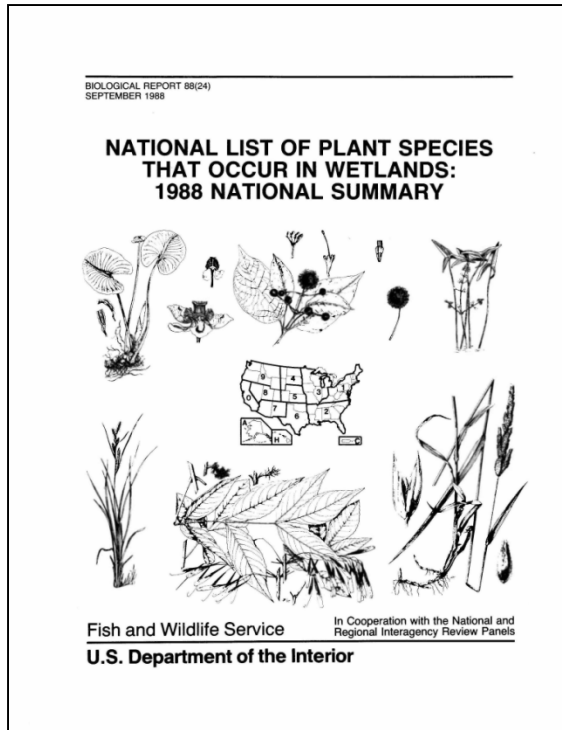
Wetlands Status and Trends



NWI Strategic Plan



National Wetland Plant List - Then and Now



*The NWPL has been made available for use.
Click here to download NWPL 2012 Plant Lists*

[ABOUT NWPL](#)
[OVERVIEW](#)
[NWPL NOMENCLATURE](#)
[ACKNOWLEDGEMENTS](#)
[CITATION INFORMATION](#)

[PROPOSE NEW SPECIES](#)

[ALL BOTANICAL SEARCHES](#)

[DOWNLOAD PANEL MEMBERS](#)
[R3 EXTERNAL BOTANIST VOTERS](#)
[FWS 1988 AND 1996 LISTS](#)

[NWPL and NTCWV Documents](#)

[ADMINISTRATION](#)

[HELP USING THIS WEBSITE](#)

[Federal Register Notice](#)

[Questions or Comments?](#)



Rocky_Mt_Larkspur

Images courtesy of BONAP et. al.



Recent Developments/Projects

- ◆ Second Edition Classification of Wetlands and Deepwater Habitats Standard
- ◆ Wetlands Mapper in the Cloud
- ◆ On-Line Training
 - What is the NWI
 - National Wetlands Classification Standard
 - National Wetlands Mapping Standard
 - Image Interpretation of Wetlands (beta)
 - How to run a Wetland Mapping Project (beta)



Implementation Plan Results

Wetlands Mapping Consortium

Webinar Topics presented recently include:

- Enhancing Wetlands Conservation through Improved Mapping and Monitoring
- Potential Wetland Soil Landscapes (SSURGO) Data Set for Wetlands Mapping
- National Enhanced Elevation Requirements and Benefits Assessment and New LiDAR Standards

Upcoming topics proposed for FY 2012 include:

- Automation Techniques for Mapping Wetlands
- New Wetlands Mapping Projects
- Mapping Floodplains



Next Steps

In the coming year, the Wetlands Subcommittee hopes to discuss:

- Filling-in-gaps for the nation
 - ◆ Digitizing existing NWI maps
 - ◆ Scalable mapping
 - ◆ Filling-in the updated coasts for sea-level rise (Gulf & S.Atl)
- Requesting a DOI Data Champion
- Developing federal cooperation for funding
- Building cooperation within the Water-Inland Data Theme



Questions?

Bill Wilen, Fish and Wildlife Service

703-358-2161

bill_wilen@fws.gov

