



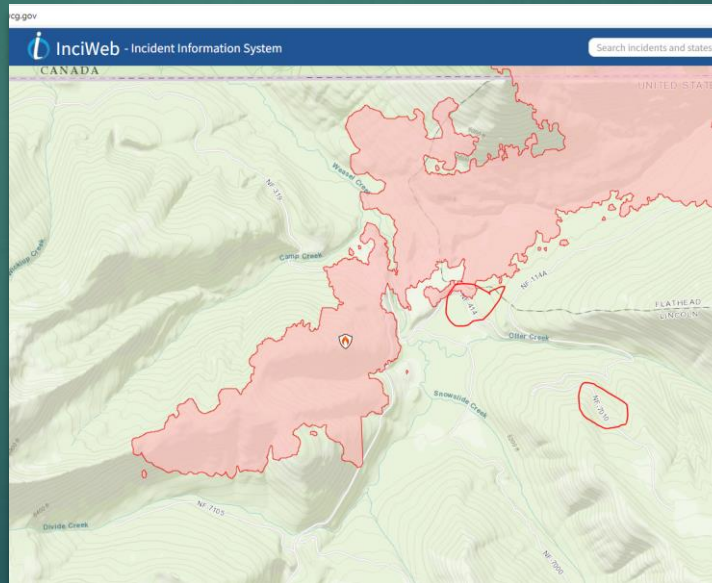
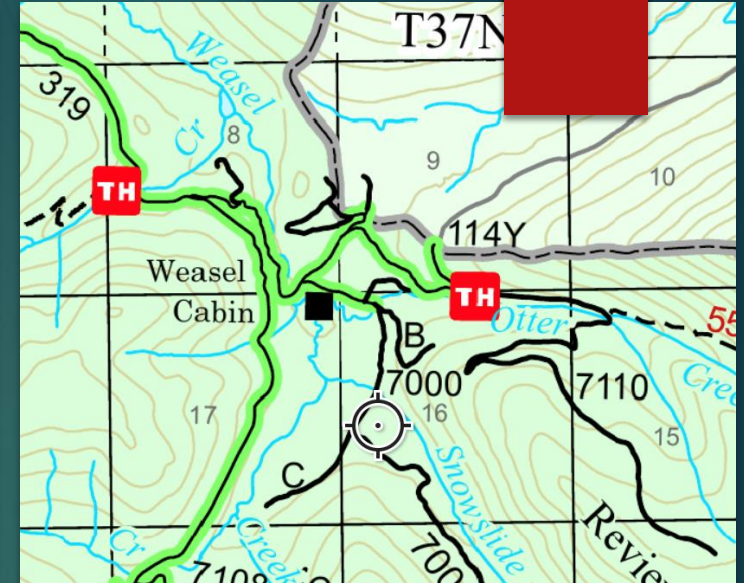
Forest Service Road Data Issues

ANNORA NELSON

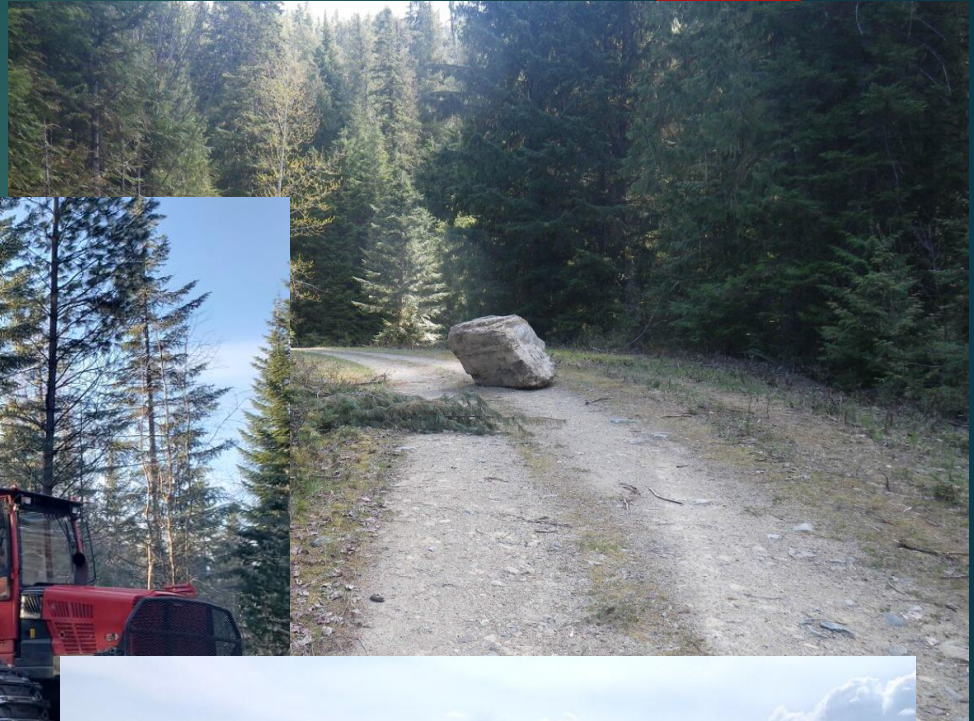
R1 OPERATIONS AND MAINTENANCE ENGINEER, USFS

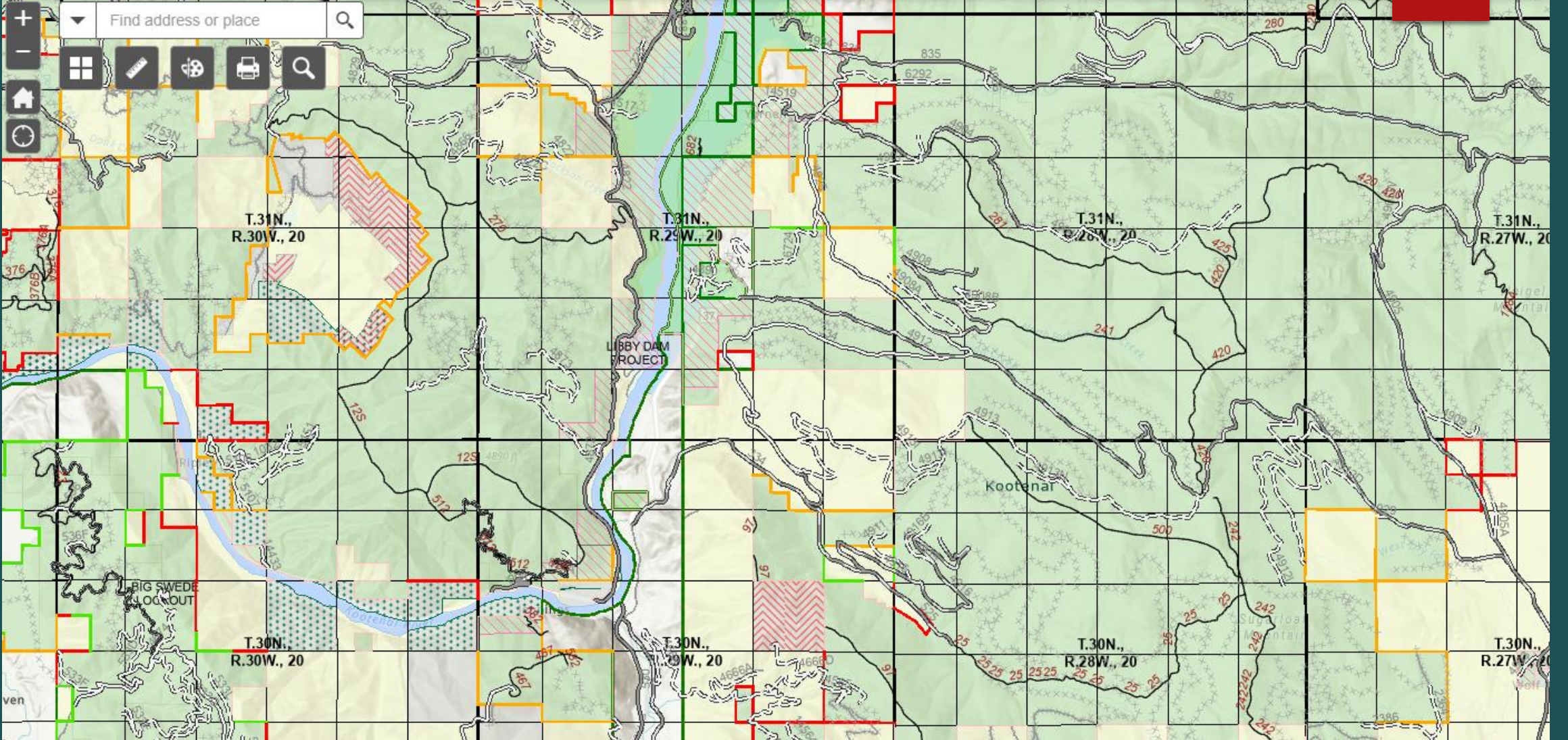
Weasel Fire

- ▶ Dispatch: "Air Attack, Weasel Fire, has the fire crossed the 414 road?"
- ▶ Air Attack: "I did not get that road number, Please repeat."
- ▶ Dispatch: "The 414 road."
- ▶ Air Attack: "I am not seeing that road on my map."



One Example of Many





- How can the Forest Service ensure our authoritative data is consumable and readily available?
- How can we advance the National Spatial Data Infrastructure?
- How can we create best practices and workflows for all to follow?
- How do we participate in FGDC working groups?
- We have much better data, how can we make sure organizations are using it?
- How do we capitalize on outside sources without compromising accuracy?
- This is not just about roads, how can this group help create a workflow to ensure accurate roads, trails, boundaries and access management?