

A large satellite dish antenna is silhouetted against a vibrant sunset sky. The sky transitions from a deep blue at the top to a bright orange and yellow near the horizon. The dish is mounted on a complex metal structure. In the background, there are faint silhouettes of mountains.

NEW MEXICO BROADBAND MAP

National Geospatial Advisory Committee

Five Minute Twirl
October 2021

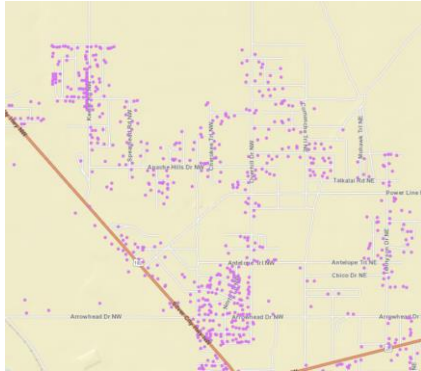
Gar Clarke, NM GIO



NM DEPARTMENT OF
**INFORMATION
TECHNOLOGY**

NMBBBP: Locating the Unserved

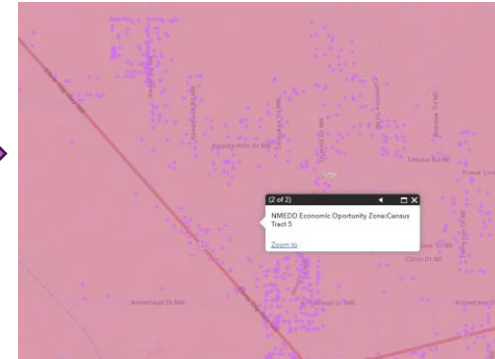
DATA STACKING



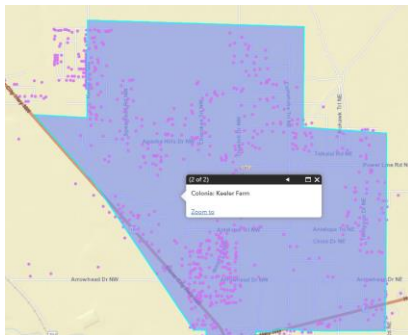
Address Locations



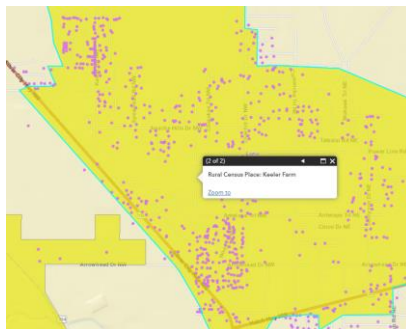
Only DSL Service



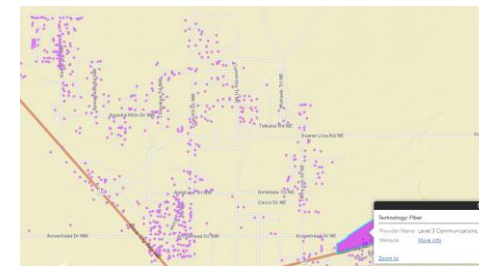
EOZ



Colonia



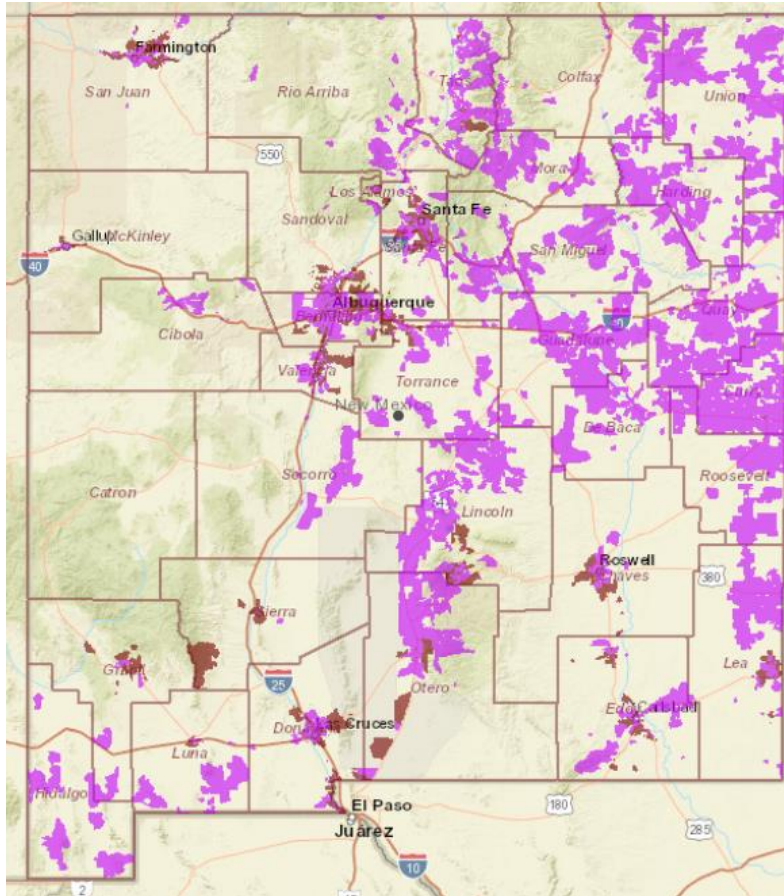
Rural Census Place



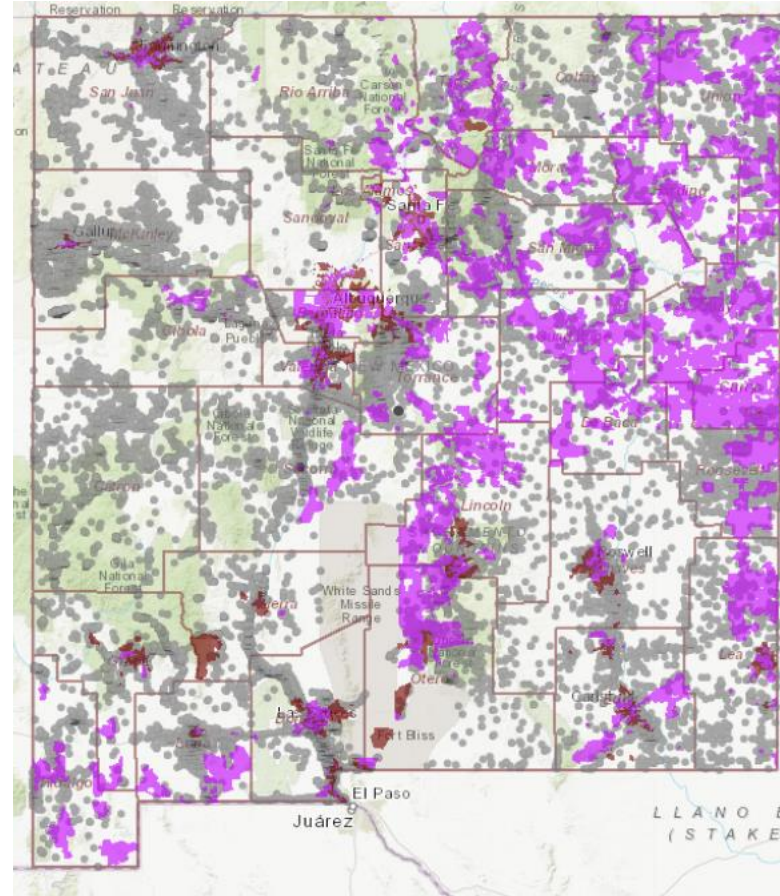
Backhaul Adjacency

NM Broadband Map: <http://nmbbmapping.org/mapping/>

NMBBP: Statewide Look

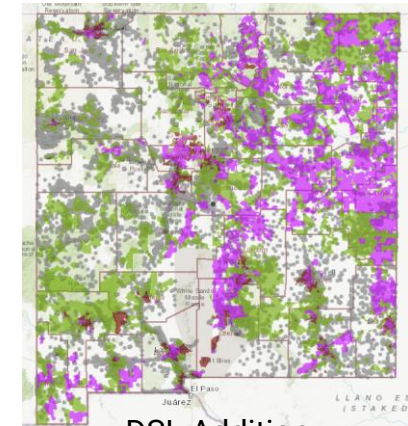


Fiber and Cable

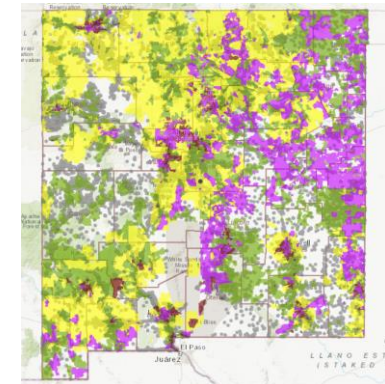


Unserved Locations

Gray Dots



DSL Addition

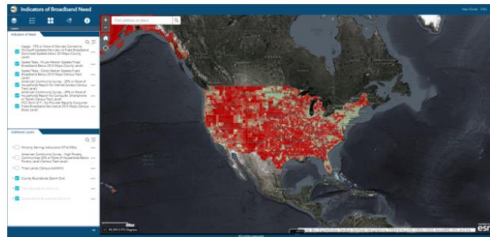


Wireless Addition

NM Broadband Map: <http://nmbbmapping.org/mapping/>

NATIONAL: Geospatial Broadband Tools

Explore the Indicators of Broadband Need Map



NTIA Indicators of Broadband Need Map

- Broadband Speed
- Minority Communities Eligibility
- Tribal, Alaska, and Hawai'i Eligibility

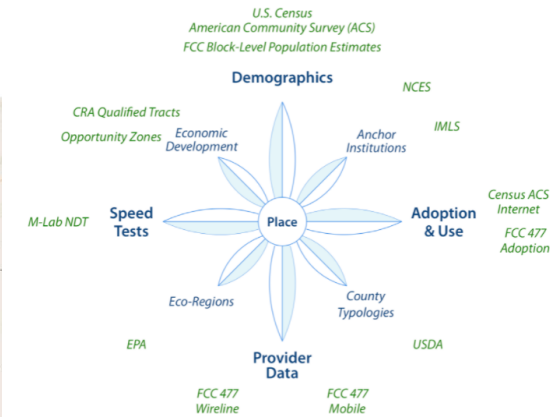
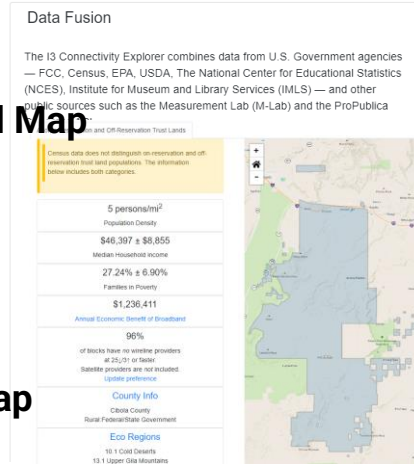
URL: [Data & Mapping | BroadbandUSA \(doc.gov\)](https://www.broadbandusa.gov/Data-Mapping)



DOI Broadband Infrastructure Map

- Federal Broadband Towers
- Federal Right of Way
- Other Federal Assets

URL: [DOI Broadband Infrastructure Map \(arcgis.com\)](https://arcgis.com)

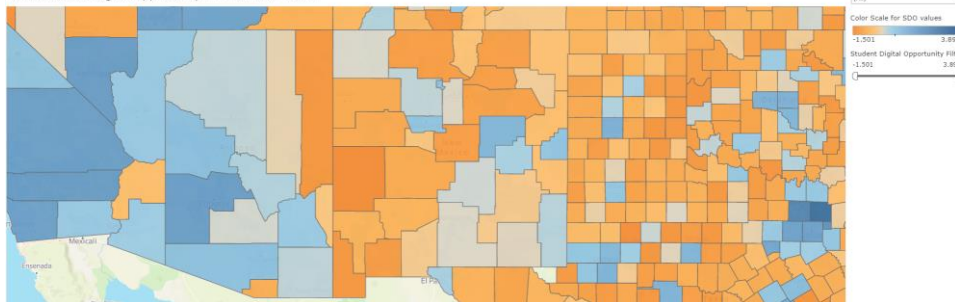


I3 Connect – Bob Balance NM

- Huge Data Fusion
- Demographics, Speed, Adoption, Use, ISP
- Socio-Economics

URL: [I3 Connectivity Explorer](https://www.i3connect.org)

K-12 Students Digital Opportunity in the United States



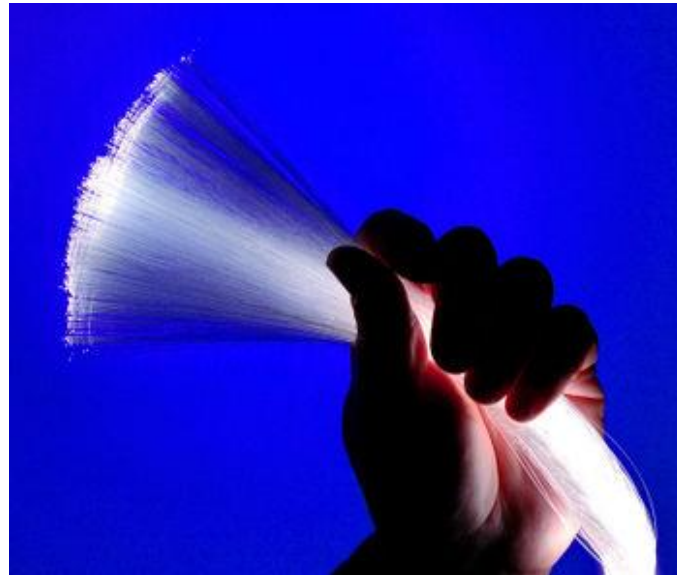
Perdue University K-12 Students

- Digital Opportunity
- Availability, Usage, and Price
- Cost Benefit Ratios

URL: [Education Open Data Challenge - D2IE Team | Tableau Public](https://educationopendatachallenge.com)

NM Broadband Map: <http://nmbbmapping.org/mapping/>

THANK YOU



Gar Clarke: George.Clarke@state.nm.us

