



National Geospatial Advisory Committee - 4/3/2024

Quarterly Meeting

Agenda

Overview of the Louisiana Statewide Topographic Mapping Program

- Introduction
- Brief Description of the Statute
- Goals and Objectives of the Program
- Role and Composition of the Statewide Topographic Mapping Advisory Committee

Major Program Activities since 2017

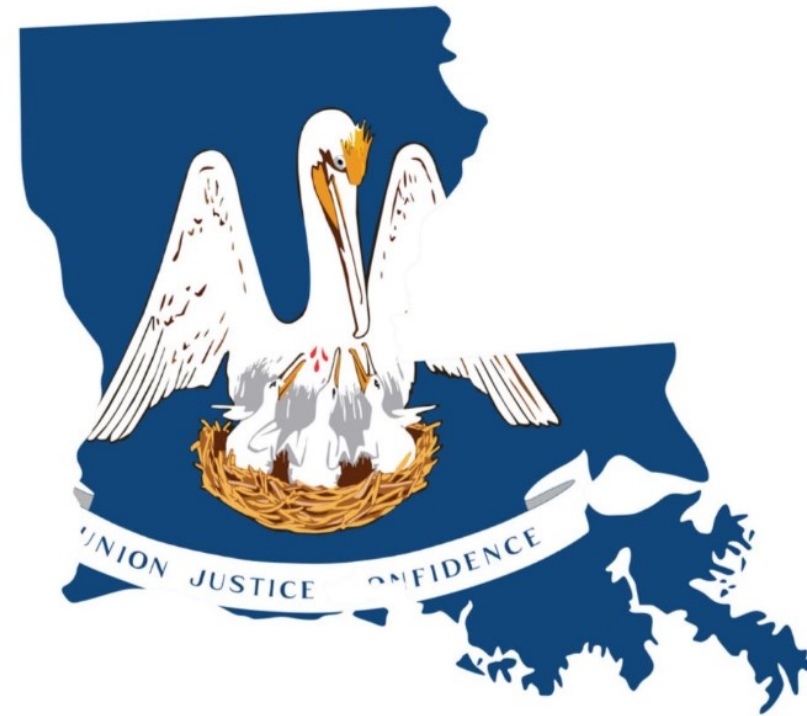
- Wide Area QL1 Lidar and High Resolution (3-6 inches) Imagery Collection Project
 - - In-house fixed-wing aircraft, Leica DMC III, Leica ALS 80 / Riegl 1460
 - - Partnerships with federal, state, and local entities
- Development and Maintenance of the Open Data Portal
- GIS REST Services
- Development and Maintenance of the Imagery Download Tool

Milestones and Achievements

Q&A Session

Introduction

- Brad Doucet, MPA
- Director - Enterprise Support Services
- LA Department of Transportation and Development
- Over 25 years in state government over 15 years as a DOTD employee and 10 years as a DOTD consultant
- Bachelor of Science in Management and Master of Public Administration both from LSU



Act 409 of the 2012 Legislative Session amended R.S. 48:36-Topographic Mapping, mandating, in part, that the DOTD “develop and maintain a statewide digital geospatial database for topographic mapping with the assistance of other state agencies or departments.”

Brief Description of the Statute



Goals and Objectives of the Program

- Provide high quality, authoritative, and easy to access data to state, local, and federal partners as well as the public
- Refresh data collection on a recurring basis
- Comply with applicable standards for data
- Stay up-to-date with current technologies



Role and Composition of the Statewide Topographic Mapping Advisory Committee

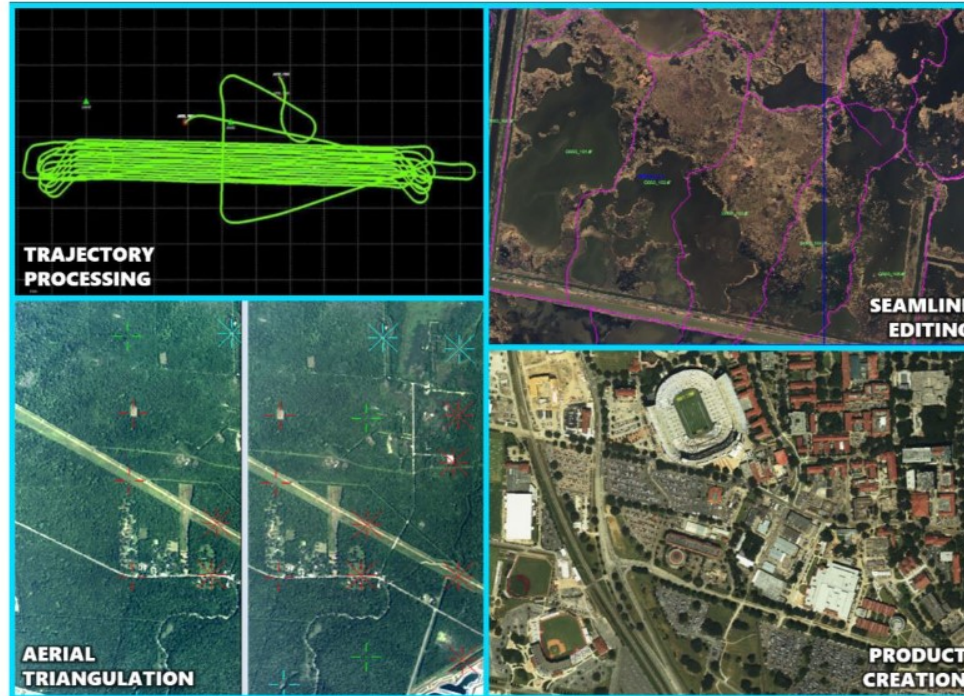
- Composed of
 - State team members from multiple agencies
 - Federal government team members
 - Local government team members
 - Industry leading consultants
- Meet bi-annually for status updates on collection, processing and distribution of data
- Provide insights to priority areas needing collection
- Provide feedback on data use and/or issues with data



Major Program Activities since 2017

Wide Area QL1 Lidar and High Resolution (3-6 inches) Imagery Collection Projects

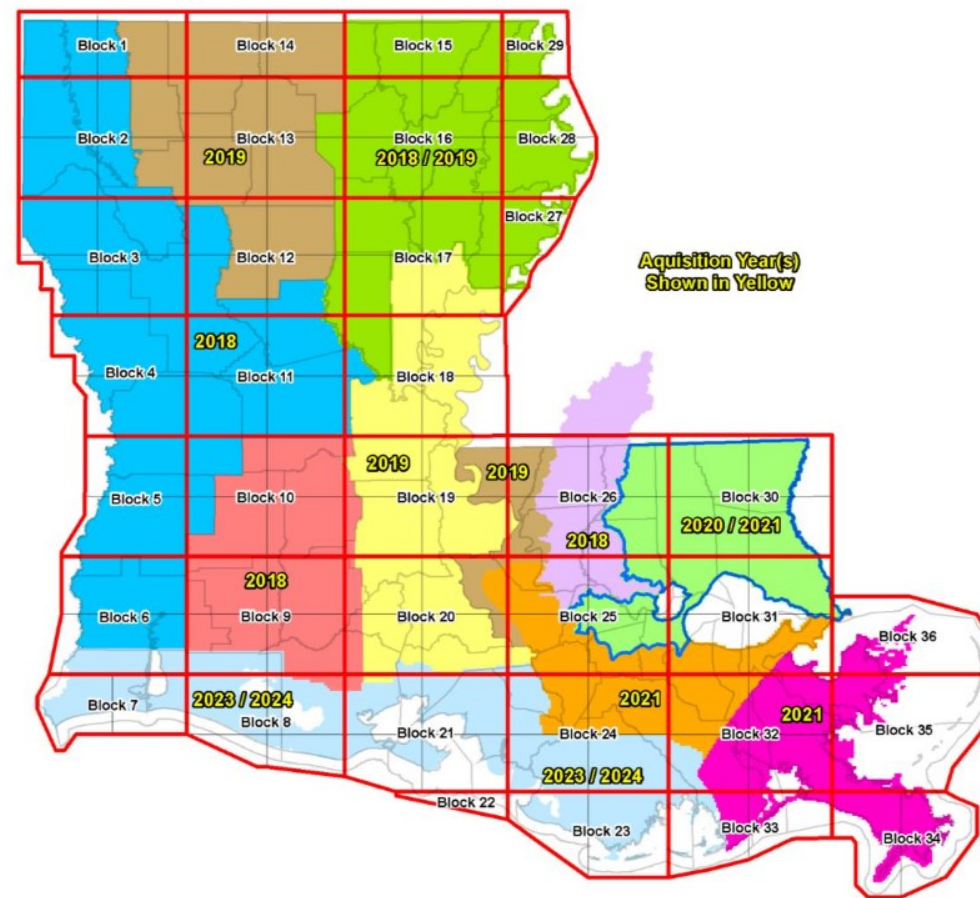
- In-house fixed-wing aircraft, Leica DMC III, Leica ALS 80 / Riegl 1460
- Partnership with federal, state, and local entities



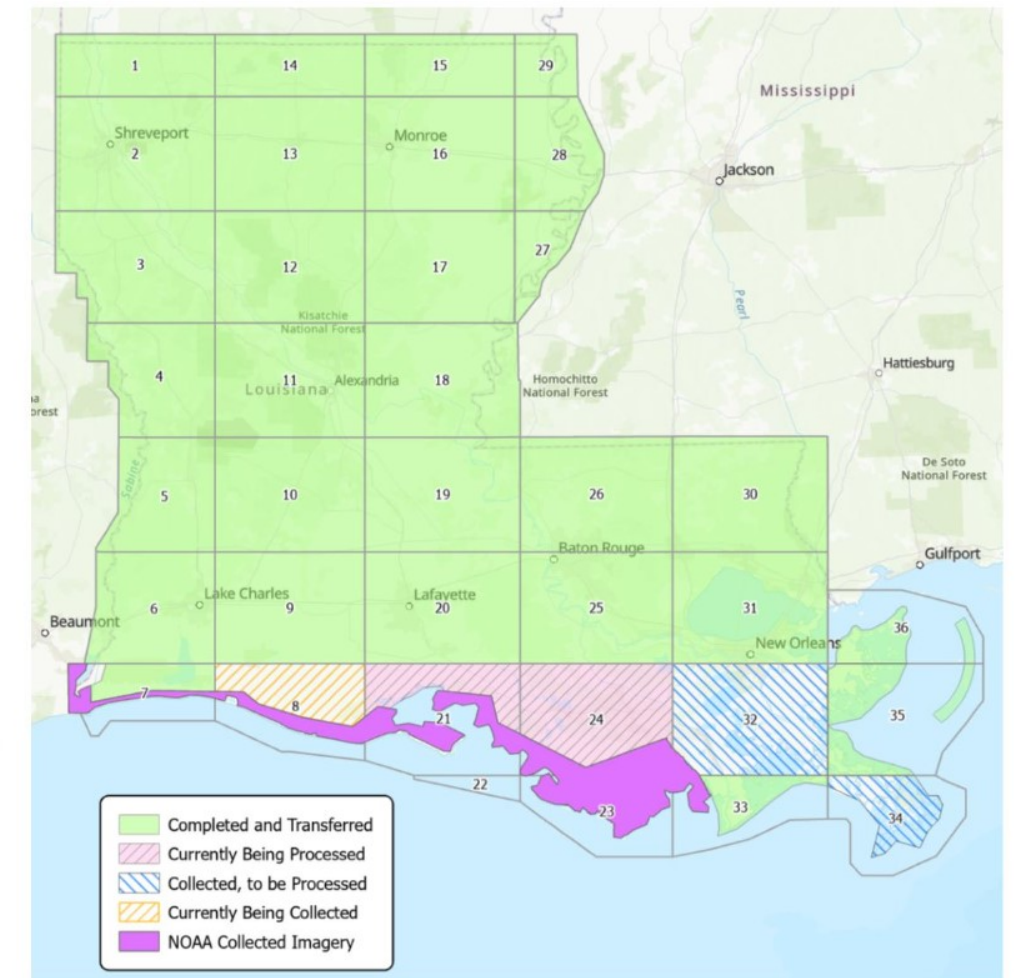
Samples

Sample figures from past meetings

Lidar



Photogrammetry



Links

[Link to REST Services](#)

[Click Here](#)

[Link to Imagery Download Tool](#)

[Click Here](#)

[Link to Open Data Portal](#)

[Click Here](#)

ArcGIS REST Services Directory

[Home](#) > [services](#)

JSON | SOAP

Folder: /

Current Version: 10.91

View Footprints In: [ArcGIS Online Map Viewer](#)

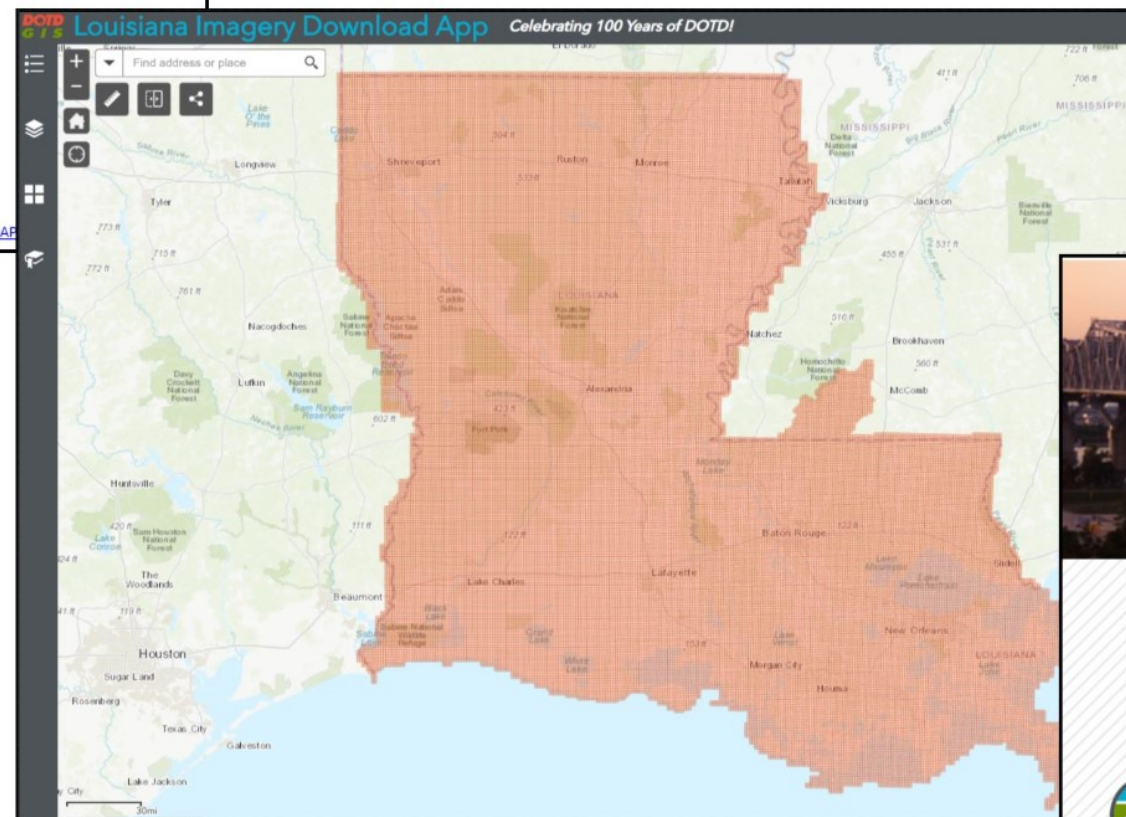
Folders:

- [Elevation](#)
- [Imagery](#)
- [OpenData](#)
- [Products](#)
- [Utilities](#)

Services:

None

Supported Interfaces: [REST](#) [SOAP](#)



LaDOTD Open Data Portal

Search, Visualize, Filter, Download

Search datasets

Explore Data by Categories

Welcome to the LaDOTD Open Data Portal. The purpose of this site is to make data from LaDOTD systems and other authoritative sources widely available through an ever-growing suite of maps, applications, dashboards, and data services.

- Transportation
- Elevation
- Land Cover
- Boundaries
- PLS
- Hydrography
- Structures
- Other

Milestones and Achievements

- Over 100 data sets related to topographic categories such as Transportation, Boundaries, Public Land Survey, and others currently available to the public via the Open Data Portal.
- The Program is coordinating and participating in the collection and publication of high quality (i.e. QLI), wide-area Lidar data across the approximate 52,000 square miles within Louisiana's borders.
- The Program is coordinating and participating in the collection and publication of high quality, wide-area imagery across the approximate 52,000 square miles within Louisiana's borders.



Q&A Session

