

ISO GEOSPATIAL METADATA IMPLEMENTATION FORUM

Welcome
Jennifer Carlino
FGDC

*

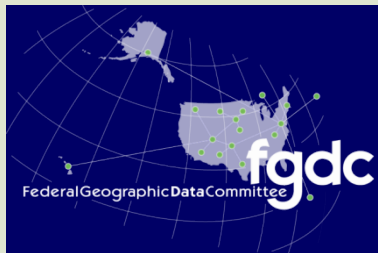
**Metadata for
the INSPIRE
Directive in
Europe**

Michael Östling
Swedish NSDI and
Coordinator for Update
of Technical Metadata
Guidelines for INSPIRE

Wednesday
February 10, 2016

PURPOSE

Offer a webinar information series for the presentation & discussion of ISO geospatial metadata standards implementation efforts through shared experiences, strategies, topics, & resources.



Audience: FGDC Metadata Working Group & other interested participants



Presenters: Community participants willing to share their expertise in common interest areas



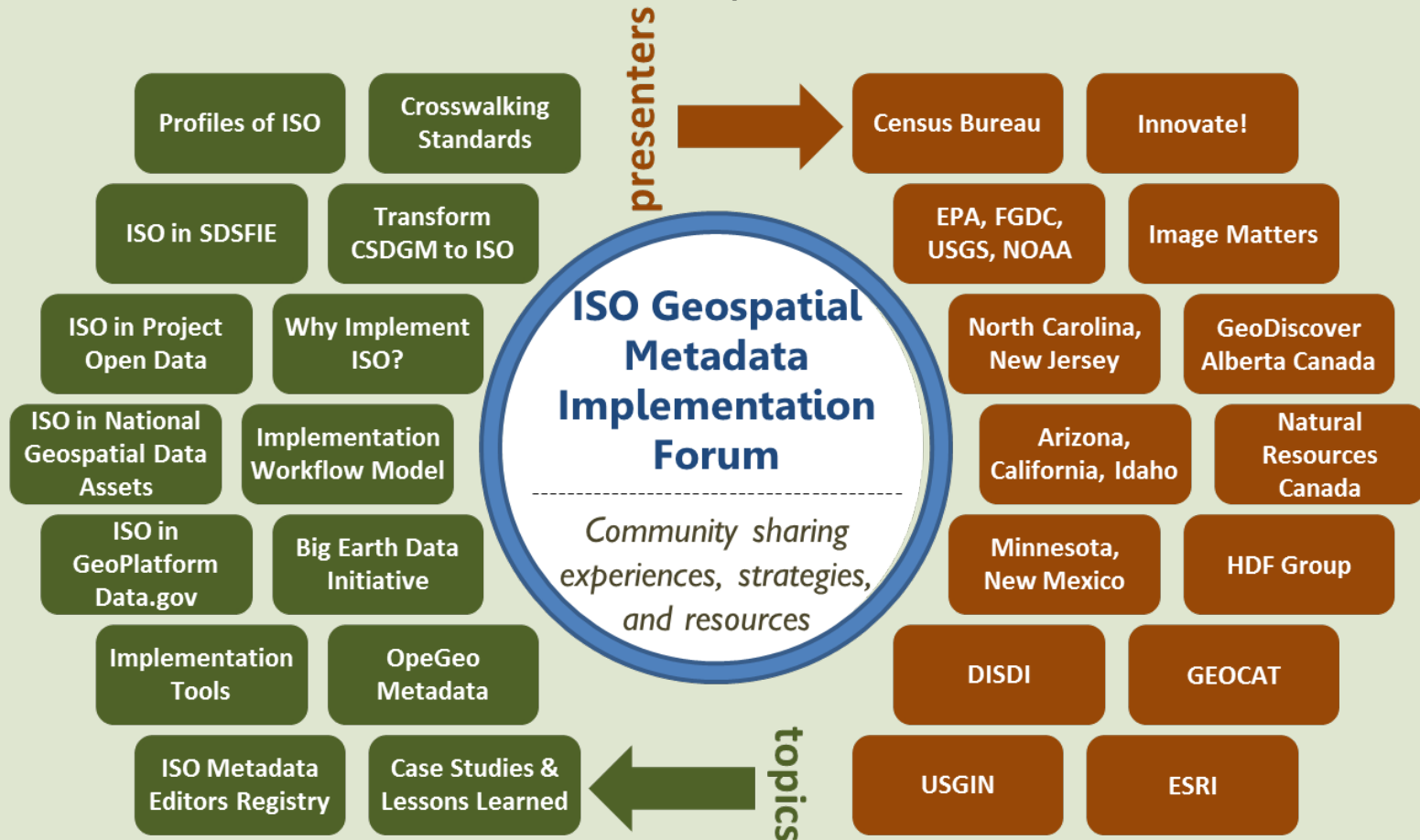
Anticipated Outcome: Each session documented & available at the FGDC Metadata website; stimulate ideas and promote use



http://www.fgdc.gov/metadata/events/iso-geospatial-metadata-implementation-forum/index_html

FORUM TOPICS AND PRESENTERS

Time: 3:00-4:30 PM ET with 60 minutes presentation & 30 minutes discussion



UPCOMING 2016 SESSIONS

March 9

Metadata Working Group

- FGDC endorsement process for standards
- ISO standards updates
- Request for News from the Field

April 13

- Establishing a new Clearinghouse: Successes and Challenges
- Metadata Approach and Implementation

Laura Gleasner
Univ. of New Mexico

May 11

- NREL's data management and metadata curation practices.

John Weers
NREL

MORE INFORMATION AND INPUT

■ Presentation materials at:

http://www.fgdc.gov/metadata/events/iso-geospatial-metadata-implementation-forum/index_html

■ Contacts:

■ Lynda Wayne

FGDC / GeoMaxim

Lwayne@usgs.gov

■ Jennifer Carlino

FGDC / USGS

jcarlino@usgs.gov

ISO 19115

THIS SESSION WILL FOCUS ON METADATA FOR THE INSPIRE DIRECTIVE IN EUROPE AND WILL DESCRIBE THE METADATA AND HOW THIS HAS BEEN IMPLEMENTED WITHIN EU. TOPICS INCLUDE: HOW TO HANDLE MULTILINGUAL GEOPORTALS, MANAGE DATA-SERVICE COUPLING, UNDERSTANDING THE INTENTIONS OF STANDARDS (WHEN THEY WERE WRITTEN) AND SOME ISSUES ON USING STANDARDS FROM ISO AND OGC TOGETHER.

- **Metadata for the INSPIRE Directive in Europe**
Michael Östling, working on Metadata strategies and Geoportals for the Swedish NSDI and also coordinator for the update of Technical Guidelines Metadata for INSPIRE