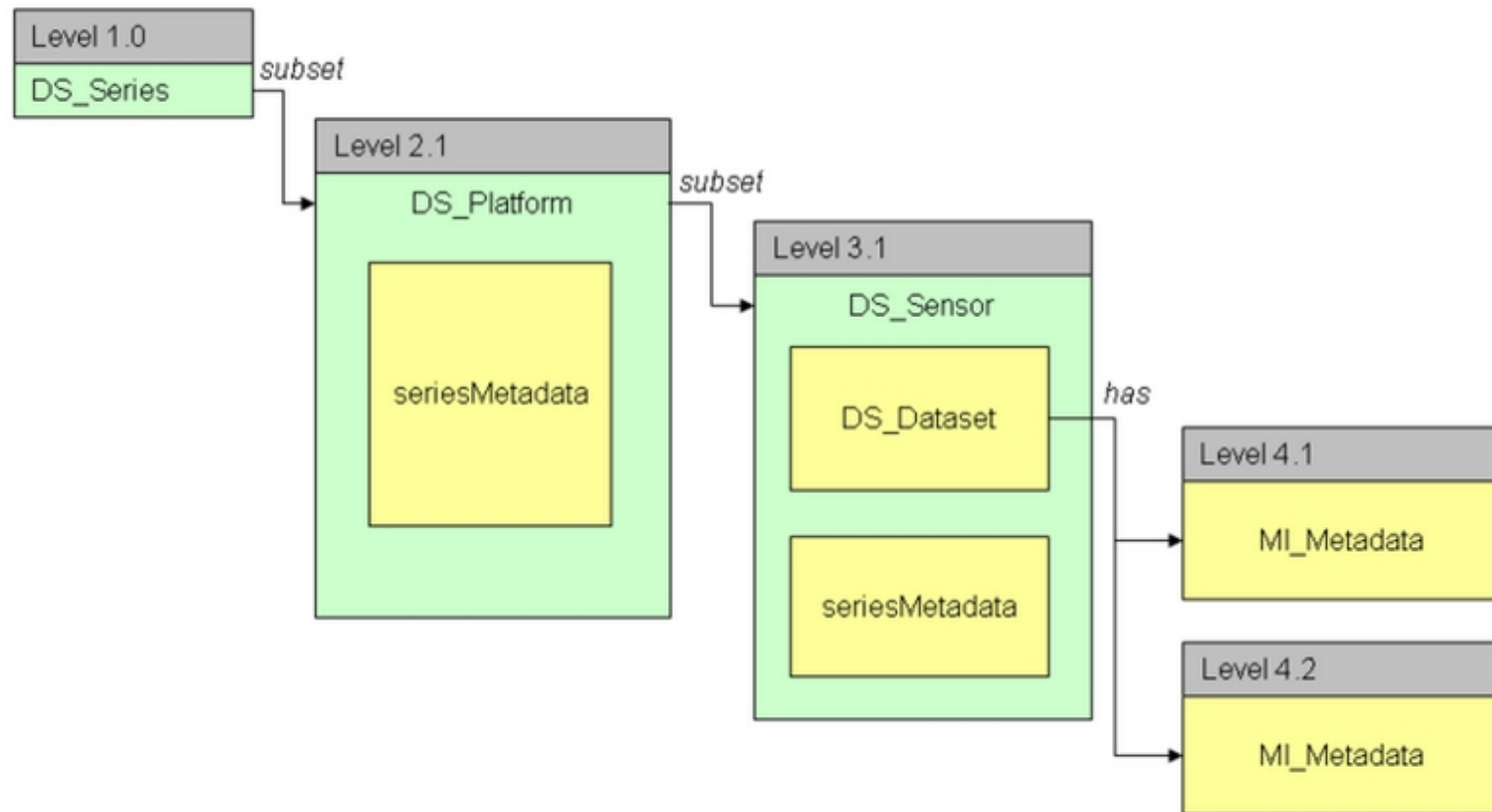


FEDERAL METADATA COORDINATORS' WEBINAR: ISO GEOSPATIAL METADATA IMPLEMENTATION

Day One
ISO Hierarchy

Tuesday
April 16, 2013
12:00-4:00 PM

BUILDING RELATIONSHIPS WITH HIERARCHICAL METADATA



BUILDING RELATIONSHIPS WITH HIERARCHICAL METADATA

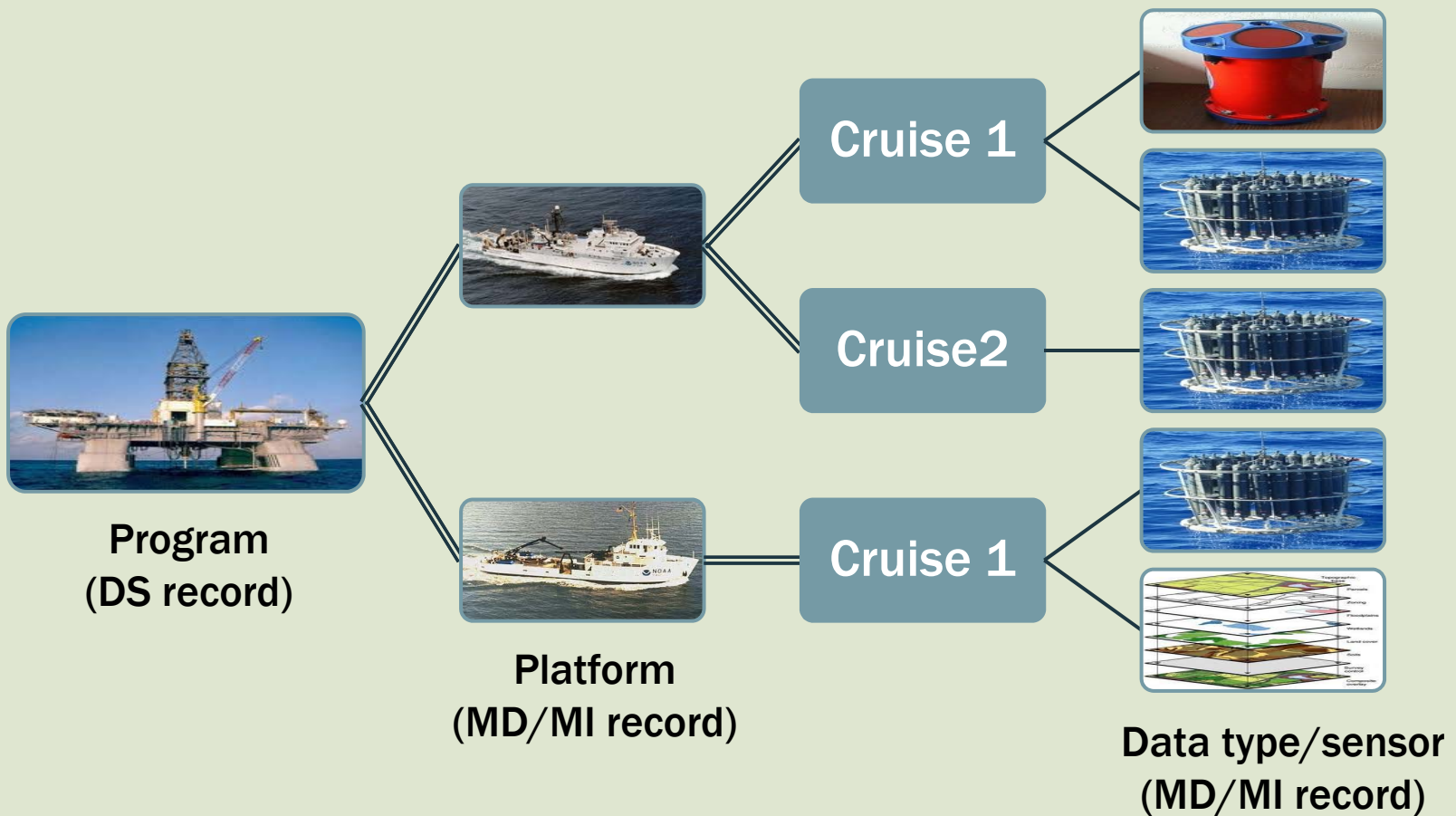


Platform
(MD/MI record)



Data type/sensor
(MD/MI record)

BUILDING RELATIONSHIPS WITH HIERARCHICAL METADATA



```

<?xml version="1.0" encoding="UTF-8"?>
<gmd:DS_Series id="NOAA_OER_program">
  <gmd:composedOf gco:nilReason="inapplicable"/>
  <gmd:seriesMetadata/>
  <!--Platform-->
  <gmd:subset>
    <gmd:DS_Platform id="EX">
      <gmd:composedOf/>
      <gmd:seriesMetadata xlink:href="*insert link to platform level metadata if it exists, otherwise remove xlink*" xlink:title="Okeanos Explorer"/>
      <!--Cruise-->
      <gmd:subset>
        <gmd:DS_Series id="*insert cruise number such as EX1003*">
          <gmd:composedOf>
            <gmd:DS_DataSet>
              <gmd:has xlink:href="*insert link dataset level (product) from cruise above*" xlink:title="*insert dataset metadata title*" />
              <gmd:has xlink:href="*insert link dataset level (product) from cruise above*" xlink:title="*insert dataset metadata title*" />
            </gmd:DS_DataSet>
          </gmd:composedOf>
          <gmd:seriesMetadata xlink:href="*insert link to cruise level metadata" xlink:title="*insert title of cruise level metadata*" />
          <!--remove this subset if there is no daughter platform-->
          <gmd:subset>
            <gmd:DS_Platform id="*insert daughter platform id*">
              <gmd:composedOf>
                <gmd:DS_DataSet>
                  <gmd:has xlink:href="*insert link to dataset level from daughter platform*" xlink:title="*insert title to daughter platform dataset metadata*" />
                </gmd:DS_DataSet>
              </gmd:composedOf>
              <gmd:seriesMetadata xlink:href="*insert link to daughter platform cruise level metadata*" xlink:title="*insert title to daughter platform metadata record*" />
            </gmd:DS_Platform>
          </gmd:subset>
        </gmd:DS_Series>
      </gmd:subset>
      <!--repeat this level of subset for another cruise-->
      <gmd:subset>
        <gmd:DS_Series id="*insert cruise number such as EX1004*">
          <gmd:composedOf>
            <gmd:DS_DataSet>
              <gmd:has xlink:href="*insert link dataset level (product) from cruise above*" xlink:title="*insert dataset metadata title*" />
              <gmd:has xlink:href="*insert link dataset level (product) from cruise above*" xlink:title="*insert dataset metadata title*" />
            </gmd:DS_DataSet>
          </gmd:composedOf>
          <gmd:seriesMetadata xlink:href="*insert link to cruise level metadata" xlink:title="*insert title of cruise level metadata*" />
        </gmd:DS_Series>
      </gmd:subset>
    </gmd:DS_Platform>
  </gmd:subset>
</gmd:DS_Series>

```

And maybe one day...

Shop All Departments

Search

Data

GO

Cart

Wish List

Books

Advanced Search

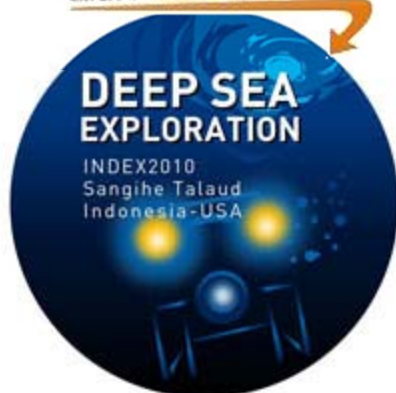
Browse Subjects

New Releases

Best Sellers

Ocean Exploration® Best
Sellers

Click to LOOK INSIDE!



INDEX 2010: Indonesia-USA Deep-Sea Exploration of the Sangihe Talaud Region "An Indonesia and US Journey to discover and value the hidden world of our deep sea"

[Digital Data Edition]

[NOAA Office of Ocean Exploration and Research](#)

(Author)

★★★★☆ (470 customer reviews) | Like (330)

Price: **\$0.00** & eligible for **FREE Super Saver Shipping** on orders over \$25. [Details](#)
[Special Offers Available](#)**In Stock.**

Ships from and sold by Noaa.gov. Gift-wrap available.

Quantity: 1



Add to Cart

or

[Sign in](#) to turn on 1-Click ordering.

or

Add to Cart with
FREE Two-Day ShippingNOAA Prime Free Trial
required. Sign up when you
check out. [Learn More](#)

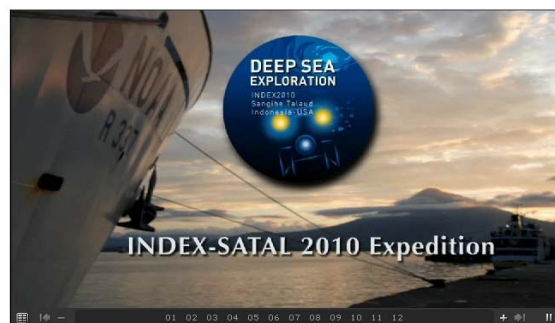
Add to Wish List

Data Description

Publication Date: 2010

From June to August 2010, an international team led by scientists from the United States and Indonesia will collaborate to explore the depths of Indonesian waters. The expedition, Indonesia-USA Deep-Sea Exploration of the Sangihe Talaud Region (INDEX 2010), will feature a number of firsts including: the maiden voyage of NOAA ship *Okeanos Explorer*; the first joint Indonesia-USA ocean exploration expedition; and the first joint international mission with two ships sending live video to scientists in Exploration Command Centers ashore. [Learn More](#)

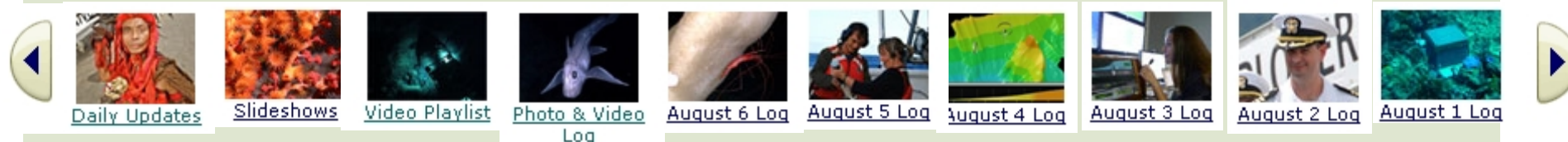
Check Out Related Media

[Ocean Explorer YouTube Channel Video](#) [NOAA, Ocean Explorer Flickr Photostream](#) [Ocean Explorer Podcast](#)

Customers Who Downloaded This Item Also Viewed

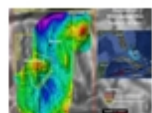


Frequently Downloaded Together



What Other Data Do Customers View After Viewing This Item?

2011 Signature Explorations



[Mid-Cayman Rise 2011](#)

(August) Join the NOAA Ship *Okeanos Explorer* as it travels to the deepest part of the Caribbean Sea, where a team of international scientists both at-sea and on shore will conduct interdisciplinary investigations of the Mid-Cayman Rise.

2011 Summary Explorations



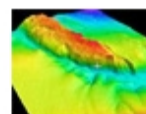
[Gulf of Mexico Expedition 2011](#)

(August – September) Very few deep water multibeam sonars are capable of providing water column backscatter data. Learn why the primary purpose of this expedition is to study the feasibility of using this capability to map gasses in the water column.



[Galápagos Rift 2011](#)

(July) The NOAA Ship *Okeanos Explorer* embarks on a unique expedition to one of the most fascinating areas of the world's oceans, to explore the water column and unexplored benthic environments in the Galápagos region.



[California Shakedown Cruise 2011](#)

(March) EX1101 provided an opportunity to get the ship underway and ensure that all of its systems and equipment were fully operational prior to integration of the ROV on board.

› [Explore similar items](#)