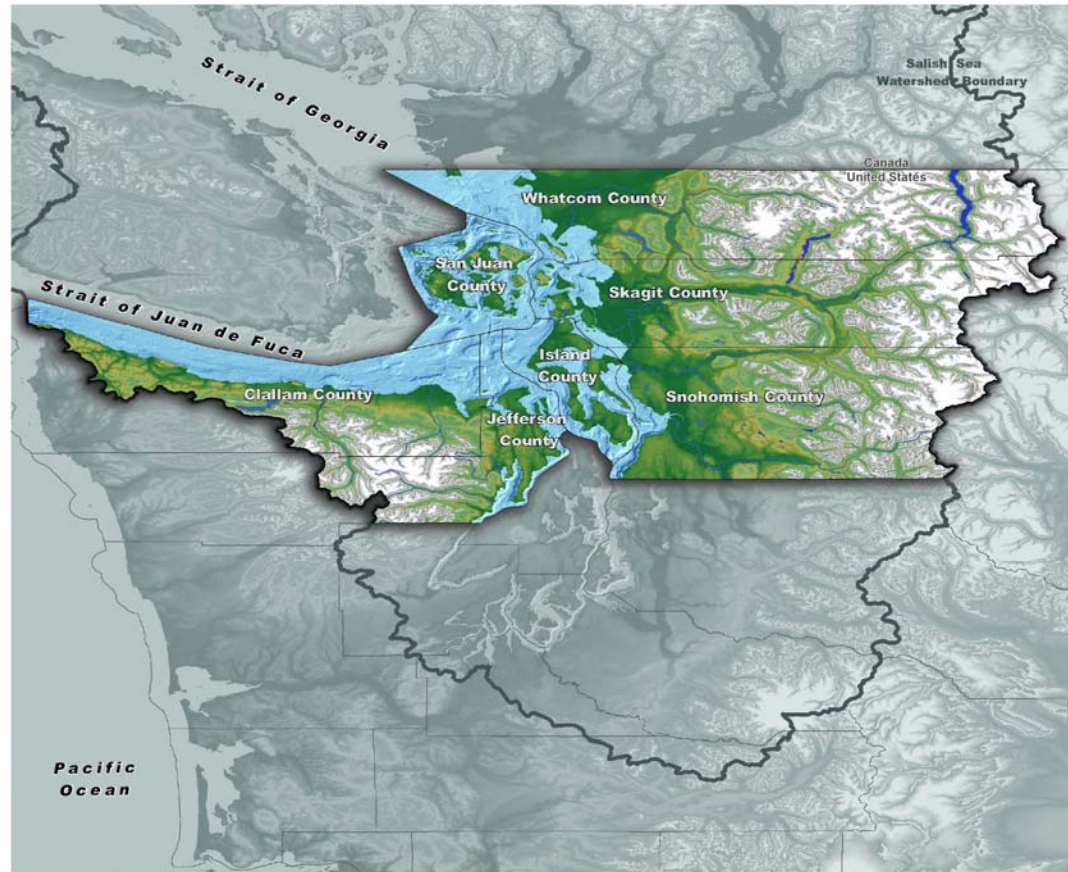


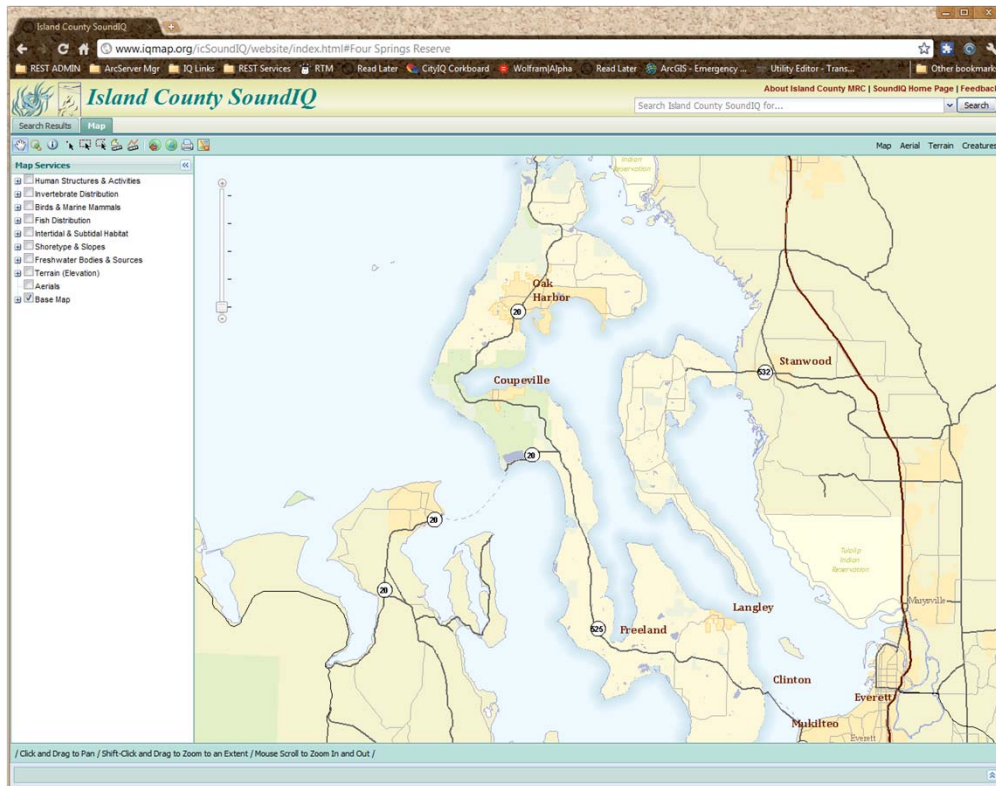
# Promoting ISO Metadata Standards Through Application to Puget Sound Nearshore Data

---



**NORTHWEST STRAITS**  
marine conservation initiative

# Project Team



- Suzanne Shull, PI  
GIS Analyst with the Padilla Bay National Estuarine Research Reserve, WA Dept. of Ecology
- Caroline Gibson, Joint lead  
Marine Program Manager for NW Straits Commission
- Ann Stark, SoundIQ Team  
GIS Analyst with the City of Bellingham

# Partner Roles

Search Results | Map | Beach Report - Borgman Road End

Update Beach Report Map

## Beach Report

Your Area

Area Code: BABor  
Name: Borgman Road End  
Description: Beach Access

Getting to the Water's Edge

**BORGMAN ROAD END**




Photo Credit: Sarah Schmidt  
Lat.: N 48 19.361 Long.: W 122 31.360  
Directions: From N of Oak Harbor, turn off Hwy 20 onto Fakkema Rd, then S onto Taylor Rd. In 0.8 miles turn E onto Silver Lake Rd, travel 3.5 miles then go N onto Green Rd for 0.25 mile, then E onto Borgman Rd and down short slope to road end. From downtown Oak Harbor, go E on Pioneer Way, turn L onto Regatta Rd, then E onto Crescent Harbor Rd. In 2 miles turn N onto Taylor Rd, and in 0.25 mile E onto Silver Lake Rd. Follow remaining directions above.  
[More Information](#), including a list of amenities and a full description of this site, is available by purchasing the Getting to the Waters Edge book.

Documents and Reports  
Related to this Area

[Assessment of shoreline spawning habitats in the Northwest Straits \(2001-2004\)](#)  
(PDF - 35.5 MB)  
Author(s): Gary Wood, Daniel E. Pentilla  
Document type: forage fish spawning habitat descriptions & maps  
Date Published: 02/01/2005

[Island County Feeder Bluff and Accretion Shoreform Mapping Final Report](#)  
(PDF - 223 MB)

- Suzanne Shull, PI  
Research tools and develop best methods for translation, creation, validation, publication, and documentation of process
- Caroline Gibson, Joint Lead  
Data document discovery  
Contract coordination  
Documentation
- Ann Stark, SoundIQ Liaison  
Making ISO metadata available

# Project Tasks

- To test and identify best available tools for transferring existing CSDGM (FGDC) metadata
- To create ISO Metadata for SoundIQ data then expand metadata creation to WDOE Enterprise Spatial Database Engine (SDE)
- To document lessons learned and policy recommendations to assist state agencies to streamline ISO update
- To publish the ISO metadata to
  - Washington State Geospatial Clearinghouse (WSGC)
  - SoundIQ (ArcServer ArcGIS 10)
- Outreach via trainings, conferences, and perhaps help desk

# Timeline

- **January to May 2012 – Organization Phase (Pre-Award)**
  - Preparation for kickoff
- **June to September 2012 – Preparation**
  - Attend NGDC ISO Standard metadata training webinars
  - Identify and resolve technical issues associated with
    - conversion/creation of ISO metadata for data currently posted to SoundIQ
- **October to December 2012 – Identify technical and policy issues associated with conversion/creation of ISO metadata for WDOE data holdings**
  - translation, creation, validation and publishing of WDOE metadata
  - Identify obstacles to making the transition for State agencies (i.e. use of GeoPortal or issues associated with metadata storage in ESRI Arc SDE vs. xml or GDB)
  - Address issues of synchronization as well as storage vs. display
  - Prioritize WDOE datasets for conversion and test the functionality of the tools
- **January to March 2013 – Identify means of sustaining implementation of ISO Standards**
  - Continue creation and translation of metadata
  - Define metadata creation resource/FAQ
- **March – April 2013 – Draft Lessons Learned and policy recommendations**
- **May 2013 - Publication Phase**
  - Provide NSDI with final document
- **May – June 2013 – Final Outreach Presentations**

Many thanks to:

Mr. Tom Carlson,  
NSDI Geospatial Liaison  
for Washington State



**NORTHWEST STRAITS**  
marine conservation initiative