

**NSDI 2010 CAP GRANTS
CATEGORY 3
INTERIM REPORT FROM MASSGIS**

Date: October 12, 2010

Agreement Number: G10AC00206

Project Title: Building and Maintaining a Map of Locations for Structures with Addresses

Organization: MassGIS, 251 Causeway Street, Suite 500, Boston, MA 02114,
www.mass.gov/mgis

Principal Investigator: Christian Jacqz, Director, 617-626-1056,
christian.jacqz@state.ma.us

Collaborating Organizations:

Cape Cod Commission

Anne Reynolds, GIS Manager
P.O. Box 226, 3225 Main Street
Barnstable, MA 02630
Phone: (508) 362-3828
areynolds@capecodcommission.org

Metropolitan Area Planning Council

Holly St. Clair, Director of Data Services
60 Temple Place
Boston, MA 02111
(617) 451-2770
hstclair@mapc.org

Merrimack Valley Planning Commission

Jerrard Whitten, GIS Manager
160 Main Street
Haverhill, MA 01830
(978) 374-0519
JJWhitten@mvpc.org

Project Narrative

Summary of project activities

We have made significant progress on supporting components of this project. These include:

- porting our Oracle-based address parsing tools to an ESRI ArcGIS 10 environment
- obtaining and parsing 3 statewide address sets that are the provide the preliminary master address files for communities
- further refining the methodology for semi-automated mapping of structure points

- completing the data model for the reconciliation of various geographic inputs
- assembling the parcel data for initial address assignment
- specifying the platforms and software environments for the field data collection

These efforts are all prerequisite to working with the organizations and communities identified in our proposal. We are, however, behind schedule due to several factors: 1) delay in obtaining data from the ARRA NE-LiDAR project –instead of a mostly automated solution for building point generation we will have to use a more manual solution, and 2) major organizational shift which has delayed the legal review and approval of the procurement vehicle for working with our cooperator organizations in the context of state procurement regulations

How inclusive is your effort?

We have been testing various aspects of the project work flow with a variety of representative (size, rural VS urban, quality of existing parcel data) communities. The effort will include work with both local and regional governments at various levels of technical capacity.

Next Steps

We will complete development of preliminary structure points with addresses for the remaining four of the seven communities in the project area. We will issue the RFQ for the various software applications to run on mobile devices.

Timeline

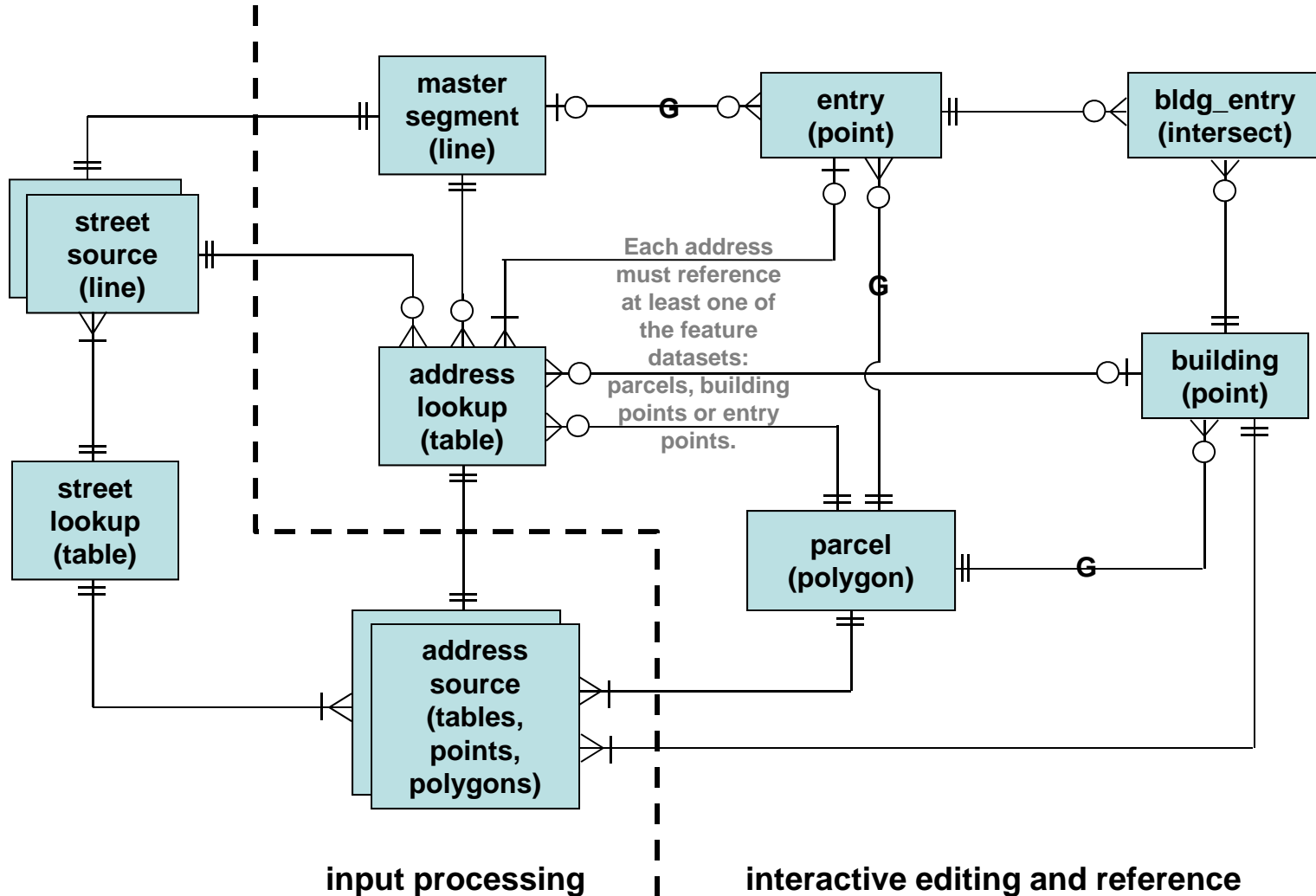
At this point we are 6 weeks or so behind where we hoped to be, but the next quarter should see significant progress. We are still hoping to complete the project by the end of the award period, June 30, 2011.

Attachments

Data model.

Data Model for Streets, Addresses, Buildings and Entry Points

cj 20100608



—G— = geographic relationship, e.g. building point lies within parcel or entry is in proximity to street segment